

## COVER SHEET

1 5 9 9 5 0

S.E.C. Registration Number

CROWN ASIA CHEMICALS

CORPORATION

(Company's Full Name)

KM 33 MC ARTHUR HIGHWAY

BO TUKTUKAN GUIGUINTO BULACAN

NICASIO T. PEREZ

Contact Person

8 2 8 3 8 7 1 9

Company Telephone Number

1 2 3 1

Month Day  
Fiscal Year

SUSTAINABILITY REPORT

FORM TYPE

0 5 0 8

Month Day  
Annual Meeting

Secondary License Type, If Applicable

Dept. Requiring this Doc.

Amended Articles Number/Section

Total Amount of Borrowings

6 5

Total No. of Stockholders

Domestic

Foreign

To be accomplished by SEC Personnel concerned

File Number

LCU

Document I.D.

Cashier

STAMPS

Remarks = pls. use black ink for scanning purposes

CROWN ASIA CHEMICALS  
CORPORATIONCROWN SUSTAINING  
35 YEARS OF EXCELLENCE

ANNUAL REPORT 2024





# ABOUT THE COVER

This cover commemorates 35 years of **CROWN**'s commitment to sustainability, capturing the essence of our journey from a deep-rooted connection to nature to significant progress in sustainable development across diverse industries. At its center, a lush green forest symbolizes our environmental foundations, gradually transitioning into a modern, eco-friendly cityscape that reflects our ongoing contributions to sustainable growth in the manufacturing and construction industry.

At the core of this visual narrative, majestic trees stand tall, their roots deeply embedded in our foundational principles of environmental accountability and our Core Values. These values—integrity, quality, innovation, and nurturing our people—anchor our internal conduct and guide our external relationships.

The details on the globe depict vital aspects of growth, infrastructure, and development, representing **CROWN**'s expanding role in creating sustainable solutions that balance nature with human advancement. The sprouting greenery reinforces our unwavering dedication to a greener future.

Each icon surrounding the globe represents a specific industry where **CROWN**'s world-class products drive progress and sustainability:

- **Workspaces and Residences:** Ensuring safe, efficient water and waste management in residential and commercial buildings, contributing to greener construction practices and healthier environments.
- **Mixed-use Commercial:** Supporting sustainable commercial developments by offering innovative piping solutions for retail spaces, offices, and other establishments that enhance operational efficiency and achieve green building standards.
- **Mobility and Transportation:** Enhancing transportation networks with reliable piping solutions for water management, drainage, and sustainable infrastructure, promoting eco-friendly and efficient systems.
- **Gateways:** Facilitating sustainable development of ports, harbors, and logistical hubs, contributing to greener supply chains and sustainable trade networks.
- **Digital Communication:** Enabling smart cities and sustainable growth by providing innovative piping solutions for the installation and protection of digital communication networks.
- **Education:** Promoting a healthy learning environment and sustainability education through sustainable infrastructure solutions for schools and universities.
- **Tourism:** Supporting eco-friendly infrastructure in tourism, including sustainable hotels, resorts, and recreational facilities, to minimize environmental impact.
- **Health and Wellness:** Contributing to hygienic, safe, and eco-friendly environments in healthcare facilities with sustainable, high-quality materials.
- **Water Sources:** Providing advanced piping solutions for water treatment, distribution, and conservation, supporting systems that ensure clean, safe, and accessible water for communities.
- **Alternate Energy:** Supporting renewable energy infrastructure, including solar, wind, and other clean energy projects, with materials that enhance energy efficiency, durability, and sustainability.

Moreover, **CROWN** provides world-class quality PVC compounds to manufacturers to produce eco-conscious products, reinforcing our commitment to sustainability.

These industries illustrate how **CROWN**'s products and values align with our commitment to a greener, more sustainable future. The earthy tones and modern typography of this cover celebrate our past achievements while reinforcing **CROWN**'s ongoing leadership in sustainability.



01

Front Cover  
About the Cover  
Table of Contents  
About the Report  
Message from the Chairman

05

## We are CROWN

Vision, Mission and Values  
Corporate Organization  
Board of Directors and Committees  
CROWN's Product Value Chain  
CROWN at a Glance

13

## CROWN 's Sustainable Products

### Innovating for a Better Tomorrow

CROWN Compounds: Progress Thru Quality

CROWN Pipes: Putting Safety and Quality First

CROWN Sanitary Pipes, Championing Sustainable Infrastructure: DWV Solutions  
CROWN PPR: A Complete line of Hot and Cold Pipes and Fittings  
CROWN Pressure Main Blue, Ensuring Sustainable Water Supply and Economic Growth  
CROWN Blue, Facilitating Clean Water Access and Promoting Public Health  
CROWN HDPE: Durable, High Pressure Performance  
CROWN Electrical Pipes, Ensuring Safety and Reliable Electrical Infrastructure  
CROWN Telecom: Durable, High Pressure Performance  
CROWN Solvent: Strong, Secure, and Sustainable Bonding for PVC Pipes  
CROWN Thermal Roofing: Your All-Weather Cool Roofing Solution  
CROWN Septic Tech: An Environment-Safe Septic Tank Solution  
CAC Your Toilet and Bath Essentials

27

### CROWN's New Innovative Products

Sustainable Solutions for Water and Waste Management  
CROWN Grease Trap: Strength, Quality, Kitchen Shield  
CROWN HDPE Double Wall: Reliable Flow Solutions for Any Environment  
CROWN HDPE Structure Wall: Durable Strength for High-Pressure Performance

31

### CROWN's Eco-Friendly Products

Sustainable Solutions for a Greener Future  
CROWN Electrical Wire and Cable: Protector for Superior Cable Solutions  
CROWN Enduro: Sustainable and Resilient Pipes Solutions

38

## CROWN Sustainable Care

### Introducing CROWN SUSTAINABLE CARE:

Caring for Tomorrow with Sustainable Solutions Our Pillars of Sustainability  
Our Commitment to a Brighter Future Together, We Can Make a Difference

CROWN Driving Sustainability through Digital Promotion

45

## CROWN's Environmental Performance

### Driving Environmental Excellence

Resource Management  
Ecosystems and Biodiversity  
Environmental Impact  
Environmental Compliance  
Our Eco-Friendly Practices  
Environmental Commitment



52

## CROWN's Social Performance

### Investing in People

An Overview of our Workforce  
Fair Compensation and Career Progression  
Understanding our Attrition Rate  
Employee Benefits: Taking Care of our People  
Building Skilled Workforce Through Training and Development  
Strengthening Labor Management Relations  
Collective Bargaining Agreement Benefits  
Other Employee Benefits  
Upholding Workplace Health and Safety  
Safety Training  
Labor Rights: Commitment to Ethical and Inclusive Workplaces

Relationship with the Community

### Responsible Supply Chain Management

Driving Sustainability Across Value Chain  
Aligning with the UN Sustainable Goals (SDGs)  
Strengthening Supplier Relationships for a Resilient Supply Chain  
Upholding Ethical and Fair Business Practices  
Ensuring Labor Rights and Employee Welfare  
Managing Risks for a more Secure Supply Chain  
Commitment to Continuous Improvement

CROWN Manufacturing in Action

### Sustainable Operations

Production Management  
Sustainable and World-class Manufacturing  
Warehouse Management  
Optimizing Resource Efficiency  
Logistic Management

### Driving Sustainable Customer Relationships

Customer Insights  
CROWN Process for Handling Customer Concerns  
Customer Loyalty  
CROWN Pipes Presence

76

## CROWN's Corporate Governance

### Excellence in Governance and Sustainability

Protection and Security Infrastructure Management  
Commitment to Excellence

80

## CROWN's Economic Performance

### Financial Resilience and Economic Contribution

Direct Economic Value Generated and Distributed  
CROWN as a Consistent Partner in Progress  
CROWN's Revenue Distribution in FY2024  
CROWN as a Value Stock  
Commitment to Integrity and Anti-Corruption Practices

87

## Transforming Infrastructure with CROWN

Supporting Sustainable Development and Economic Growth





# ABOUT THE REPORT

CROWN Asia Chemicals Corporation's 6th Sustainability Report is a testament to our commitment to responsible business practices. Over the years, our financial strategies have consistently aligned with our mission to deliver world-class products while advancing sustainability.

This year's report illustrates our achievements in integrating environmental, social, and governance (ESG) principles into our operations. By prioritizing innovation, efficiency, social responsibility, safety, and quality, we have strengthened our market position and made meaningful contributions to the communities we serve.

As we celebrate CROWN's 35th anniversary, we remain dedicated to our vision of creating long-term value for our shareholders, partners, and society. Together, we are building a sustainable future, ensuring that every decision reflects our commitment to economic growth and environmental accountability.

Built on a legacy of excellence, CROWN is set to ascend to even greater success in the coming years.

  
NICANOR T. PEREZ  
Chief Financial Officer/OIC  
(+63)8283-8719  
0917-792-2828  
ntperez@crownpvc.com.ph



# CROWN®

SUSTAINING  EXCELLENCE

# MESSAGE FROM THE CHAIRMAN

## DEAR SHAREHOLDERS, EMPLOYEES, AND PARTNERS,

As we celebrate CROWN's 35th anniversary, I am filled with pride as I reflect on our journey of sustained excellence, built on a foundation of world-class products, people development, good governance and environmental stewardship. Over the past three and a half decades, CROWN has risen to become an industry leader, setting a benchmark recognized by both international and local certifying bodies. Our success stands as a testament to the dedication of our people, our drive for innovation, and our responsible approach to business.

CROWN Asia Chemicals Corporation, the company behind the leading brand CROWN Pipes, has established itself as a premier plastic manufacturer in the Philippines. From the year 1989, CROWN has specialized in PVC compounds (Petrovin and Tecnovynl) for various applications—wire and cables, shrink wrap, IC tubings, and blow molding—while also offering uPVC, PP-R, and HDPE pipes and fittings, PVC Thermal Roofing, electrical wire and cable protectors, grease traps, bath essentials, and the innovative Septic-Tech solution. Certified with the ISO 9001:2015 Quality Management System, CROWN ensures world-class standards in delivering reliable, high-quality products that meet both domestic and international demands.

CROWN is committed to delivering world-class, ISO-certified quality and has expanded its global presence through a diverse range of product lines and are recognized internationally. Among its most notable accolades are citations from the Financial Times (2018), Forbes Asia's Best Under a Billion Dollar Publicly Listed Company (2020 & 2022), recognition for Shariah Compliance (2017–2019 & 2021–2022), and the prestigious Golden Arrow Award, received for three consecutive years (2021, 2022, and 2023).

As a publicly listed company since 2015, CROWN has earned the trust of the construction, telecommunications, and infrastructure industries. Our mission remains clear: to provide superior, competitively priced quality products that meet today's needs and to deliver sustainable solutions for generations to come.

From our humble beginnings with a team of 22 employees, we have grown to nearly 300, alongside over 1,000 partners, including top developers, contractors, architects, engineers, dealers, distributors, and both large and small depots within the Philippines. Our compounds, once solely for local use, are now exported globally, and our pipes, fittings, and roofing materials play critical roles in major infrastructure projects across the nation.





**INNOVATION** is at the core of our environmental management practices. We invest in research and development to create eco-friendly products and processes. Our commitment to innovation is evident in our continuous improvement of manufacturing techniques, resulting in reduced emissions, lower energy consumption, and minimized waste. This effort is not only beneficial for the environment but also enhances our competitive edge in the market through our eco-conscious, world-class quality products.

**EFFICIENCY** is the foundation of our sustainability efforts, enabling us to minimize environmental impact while optimizing resource utilization. Our production team is dedicated to using materials and energy judiciously, supported by facilities designed for enhanced energy efficiency and water conservation. To strengthen these efforts, we have implemented rainwater collection, filtering, and recycling systems, which provide sustainable water sources for production processes. Additionally, our recycling programs embody circular economy principles by repurposing and reusing waste materials, reducing landfill contributions, and promoting resource sustainability. These initiatives not only contribute to environmental stewardship but also ensure a resilient and responsible production framework.

At **CROWN**, we embrace our **social responsibility** to future generations by prioritizing sustainability and fostering positive impact. Driven by our commitment to environmental conservation, we have developed environmental management policies and set targets to reduce our carbon footprint, aligning with global climate change efforts. Our dedication also extends to our employees through enhancement programs, including birthday leave to spend quality time with family, emergency leave during adverse weather, and continuous training and career development opportunities. Aligned with this vision, we proudly present **CROWN Sustainable Care: Caring for Tomorrow with Sustainable Solutions**—a comprehensive initiative focused on Environment, Education, Partnerships, Health and Well-Being, and Good Governance. These efforts reflect our commitment to the United Nations Sustainable Development Goals and our pledge to make a meaningful contribution to our community and our planet.



Mr. Walter H. Villanueva  
CROWN President



**SAFETY** is a top priority at **CROWN**. We ensure that our employees, partners, and customers are always in a safe environment. Our commitment to safety is embedded in every aspect of our operations, from our manufacturing processes to our workspaces. We adhere to strict safety standards, providing comprehensive training and implementing best practices to maintain a secure and hazard-free environment. This ensures that the well-being of everyone associated with **CROWN** is always safeguarded.

**QUALITY** is at the heart of everything we do. We are committed to delivering world-class products that meet or exceed industry standards. Our focus on quality extends from product design to production, where we consistently maintain high standards of excellence. Through continuous improvements, testing, and adherence to ISO certifications, we ensure that every product we deliver is of the highest quality, contributing to the safety and satisfaction of our customers and end-users. We continuously set new benchmarks for quality, ensuring we maintain our competitive edge in the marketplace.



## AS WE LOOK TO THE FUTURE,

**CROWN** remains committed to pushing the boundaries of environmental excellence. Our strategic roadmap for the next decade includes further investments in green technologies, expanding our portfolio of sustainable products, and enhancing our environmental management system. We will continue to lead by example, setting new standards for sustainability in our industry, with focus on innovation, efficiency, social responsibility, safety and quality. This will ensure that the end-users of our products enjoy safe homes, conducive workplaces, and harmonious environments to live in.

In closing, I would like to extend my deepest gratitude to our employees, whose dedication, commitment and innovation drive our achievements. I also thank our shareholders and partners for their untiring support and confidence in our vision.

The **CROWN** Family, along with our partners, dedicated employees, stakeholders, and professional groups, is honored and humbled by the achievements and recognitions we have received over the years. We will continue to build a sustainable and prosperous future for the **CROWN** Family, the communities we work with, and to our country.

Thank you for being part of our journey. We look forward to another

# 35 YEARS OF SUSTAINABLE EXCELLENCE

We believe that, together, we can make a difference!

Sincerely,

WALTER H. VILLANUEVA  
Chairman



**CROWN ASIA CHEMICALS CORPORATION**  
PUTTING SAFETY AND QUALITY FIRST





# WE ARE CROWN®

## Mission, Vision and Values

CROWN Asia Chemicals Corporation (CROWN), a leader in the Philippine plastic manufacturing industry, has built a solid reputation over its 35-year legacy. Our expertise spans a diverse range of products, including PVC compounds for wires and cables, shrink wrap, IC tubings, uPVC, PP-R, and HDPE pipes and fittings, as well as PVC Thermal Roofing, Grease Traps, CAC Bath Essentials, and Septic-Tech solutions.

Established on **February 10, 1989**, and registered with the Securities and Exchange Commission, CROWN has continuously pursued excellence. This dedication is reflected in our ISO certifications and international accolades, including recognition from *Financial Times* and *Forbes Asia*.

Since becoming a publicly listed entity on **April 27, 2015**, with the Philippine Stock Exchange (PSE), CROWN has been at the forefront of providing innovative and competitive solutions that drive sustainability. Our commitment to corporate governance has been recognized through the prestigious **Golden Arrow Awards**, received for three consecutive years by the Institute of Corporate Directors (ICD).

CROWN remains steadfast in its promise to world-class quality and sustainable practices. We are driven to deliver superior products that meet the needs of customers in construction, telecommunications, and infrastructure. Our mission is to enhance our global presence while upholding our commitment to sustainability, with a strategic focus on **safety and quality, environmental stewardship, education, partnerships, health and well-being, and good governance**.

## CORE VALUES

The following are the guiding principles of the Company in its internal conduct as well as its relationship with the external world:



Committed to integrity in generating profitable returns.



Reputation for quality, reliability, and value for money.



Outstanding products that meet or exceed national and international standards.



World class products that are innovative and of the latest technology.



Nurturing our employees to develop their full potential and work productively towards a common goal.



## MISSION

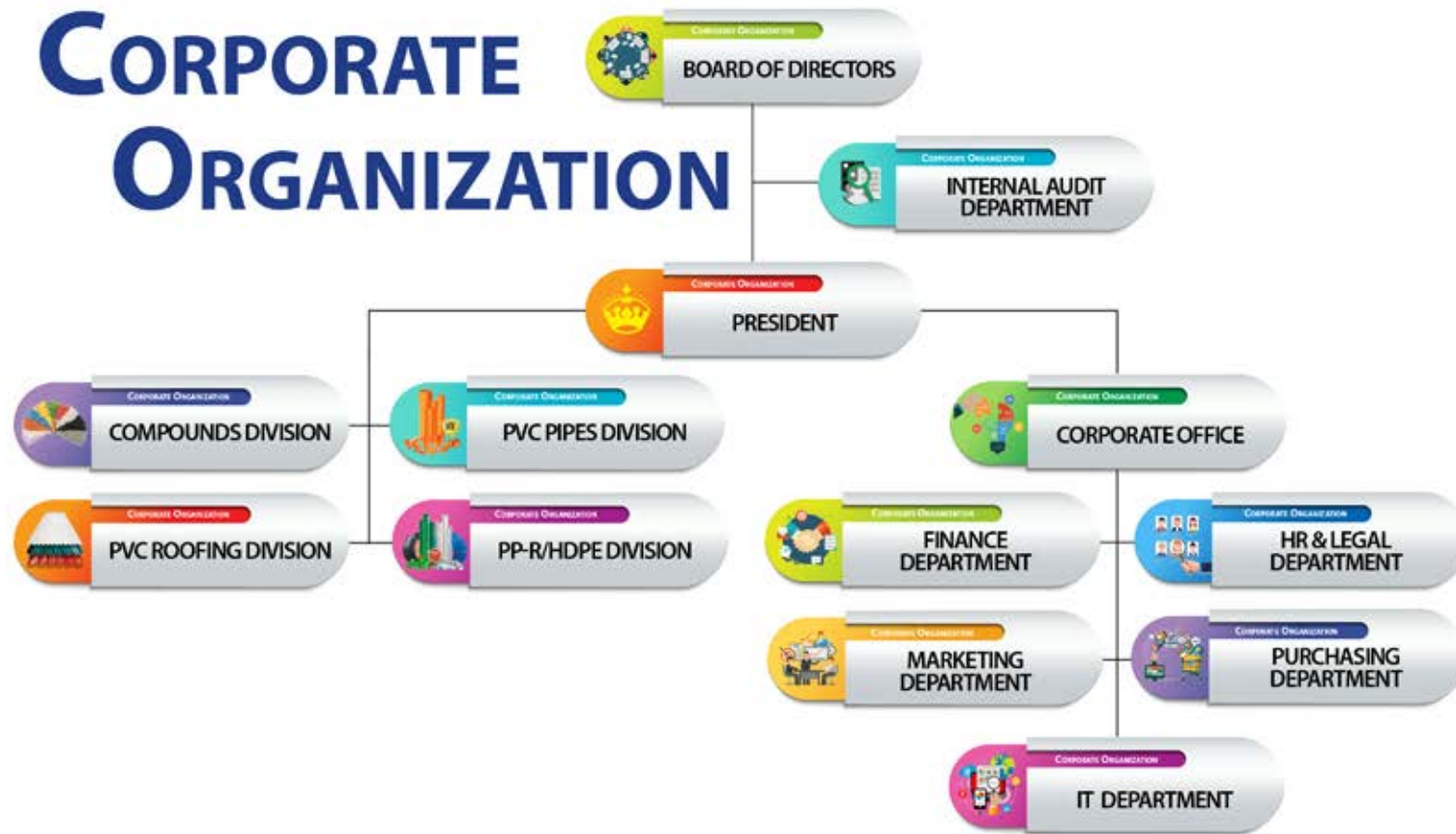
To strive for market leadership by offering innovative industrial and chemical products that meet or exceed global standards ensuring quality, reliability and value for money for our customers, and upholding a nurturing environment for our employees, while managing the business professionally with integrity, providing good return to our shareholders.

## VISION

To be the leading and preferred manufacturer and supplier of world-class, innovative industrial and chemical products.



# CORPORATE ORGANIZATION



# BOARD OF DIRECTORS

**Walter H. Villanueva**  
Chairman of the Board

**Nicasio T. Perez**  
Director

**Eugene H. Lee Villanueva**  
Non-Executive Director

**Fernando S. Lopez**  
Lead Independent Director

**Derrick P. Villanueva**  
Director

**Atty. Jason C. Nalupta**  
Corporate Secretary

**Rogelio B. Panlasigui**  
Independent Director

**Hans Joseph T. Perez**  
Director

**Atty. Ann Margaret K. Lorenzo**  
Asst. Corporate Secretary

**Joel L. Tan-Torres**  
Independent Director

**Daphne V. Yu**  
Director

# COMMITTEES

**Fernando S. Lopez**  
CHAIRMAN

**MEMBERS**  
Eugene H. Lee Villanueva  
Nicasio T. Perez  
Rogelio B. Panlasigui  
Joel L. Tan-Torres

**AUDIT COMMITTEE**

**Rogelio B. Panlasigui**  
CHAIRMAN

**MEMBERS**  
Derrick P. Villanueva  
Hans Joseph T. Perez  
Joel L. Tan-Torres  
Fernando S. Lopez

**RISK OVERSIGHT COMMITTEE**

**Joel L. Tan Torres**  
CHAIRMAN

**MEMBERS**  
Derrick P. Villanueva  
Hans Joseph T. Perez  
Rogelio B. Panlasigui  
Fernando S. Lopez

**CORPORATE GOVERNANCE**

# COMPANY EXECUTIVE OFFICERS

**Walter H. Villanueva**  
President  
General Manager- PVC Roofing and Compounds Divisions  
Chief Risk Management Officer

**Nicasio T. Perez**  
Vice President  
Treasurer  
Chief Financial Officer - OIC

**Derrick P. Villanueva**  
General Manager  
PVC Pipes Division

**Hans Joseph T. Perez**  
General Manager- PP-R and HDPE Pipes Division

**Marie Grace N. Dalupan**  
AVP-Finance  
Compliance Officer



# VALUE CHAIN



MARGIN/VALUE

## SECONDARY ACTIVITIES

### CORPORATE STRUCTURE AND GOVERNANCE

Good governance leads the company to a healthy balance sheet and profitability, effective implementation of plans, efficient daily operations, dividend contributions to its shareholders, and benefits for its employees. The company is ISO Certified and is Publicly listed on the Philippine Stock Exchange.



### HUMAN RESOURCES MANAGEMENT

Employee health, benefits, and training are prioritized to ensure retention, engagement and work efficiency.



### TECHNOLOGICAL DEVELOPMENT

Systems and technological processes are regularly reviewed and updated to meet growing market demands and maintain relevance.



### PROCUREMENT

Careful planning helps minimize the cost of supply and bulk purchasing. Supplier audits are conducted quarterly to ensure compliance with local and international standards as well as to desirable social values.





# CROWN® AT A GLANCE

For thirty-five years, CROWN has consistently enhanced its products and services provided by employees, steadfast in our commitment to prioritize safety and quality above all else.



**1986**

Crown Asia Chemicals Corporation was registered with the SEC as a manufacturer of plastic compounds and products.



**1990**

Commercial operations began in June 1990 with 22 employees at its plant in Guiguinto, Bulacan with a capacity of 1,800 metric tons a year.



**1994**

The PVC compounds were accredited and recognized under the U.S. Underwriters Laboratories (UL). Started exporting its PVC compounds.



**1998**

Earned ISO 9002:1994 Certification for PVC compounds. Began manufacturing "CROWN Pipes" using German technology.



**2000**

Introduced Crown Electrical Conduit pipes with Crown Supreme thick wall pipes and Crown Hi-Tech pipes and Crown Blue potable water pipes.



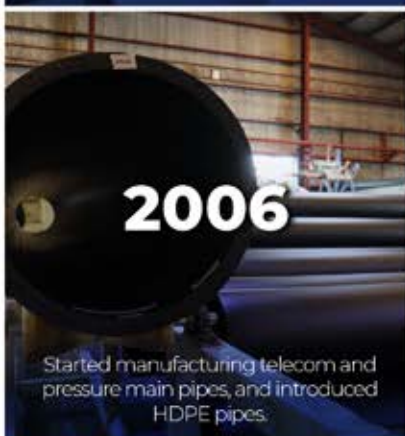
**2002**

Crown Sanitary pipes were produced with the distinction of having built-in UV Protection for superior and longer-lasting drain-waste-vent (DWV) Pipes.



**2003**

Expanded the application of its PVC compounds for use in packaging, IC tubes, films and bottles, doors, and window profiles.



**2006**

Started manufacturing telecom and pressure main pipes, and introduced HDPE pipes.



**2009**

The Pipe Division was awarded its ISO 9001:2000 Certification from Certification International.



**2010**

Compound Division received its ISO 9001:2008 Certification on April 7, 2010, for operating a quality management system in the manufacture and distribution of thermoplastic compounds.



**2014**

Celebrated 25 years as a leading manufacturer of thermoplastic compounds and trusted supplier of world-class pipes.



**2015**

On April 27, 2015, Crown Asia Chemicals Corporation was publicly listed on the Philippine Stock Exchange. Started manufacturing of PP-R and HDPE pipes.



**2016**

Launched its new sustainable product line - ENDURO Pipes and fittings.



**2017**

Production and supplying to projects of PVC Thermal Roofing. Sharia-Compliant Listed Company.



**2018**

Recognized by Financial Times' Top 1000 High Growth Companies in Asia-Pacific. Achieved ISO 9001:2015 certification for both Compounds and Pipes Divisions. Sharia-compliant listed.



**2019**

Introduced Crown Septic-Tech in the market. Sharia-Compliant Listed Company.



**2020**

CROWN ASIA CHEMICALS INCLUDED IN FORBES "BEST UNDER A BILLION" LIST. Ranked #170 in Forbes Asia's "Best under a Billion" top-performing listed companies in the Asia-Pacific Region. Sharia-Compliant Listed Company.



**2021**

CROWN introduced its new CAC Your Clean and Comfort Essentials product line. Sharia-Compliant Listed Company.



**2022**

Named one of Forbes Asia's "Best under a Billion" companies again. Earned the ACGS Golden Arrow for corporate governance. Sharia-compliant listed.



**2023**

Introduced CROWN Electrical Wire and Cable Protector. Received the Golden Arrow again, Sharia-compliant for the 7th consecutive year.



**2024**

CROWN introduced its new products: the CROWN Grease Trap, CROWN HDPE Double Wall, and CROWN HDPE Structured Wall. Crown Asia Chemicals Corporation is among The Philippines' Growth Champions 2024 and a three-time Golden Arrow awardee under the ASEAN Corporate Governance Scorecard 2023.

# CROWN



**CELEBRATES ITS 35 YEARS OF EXCELLENCE.**





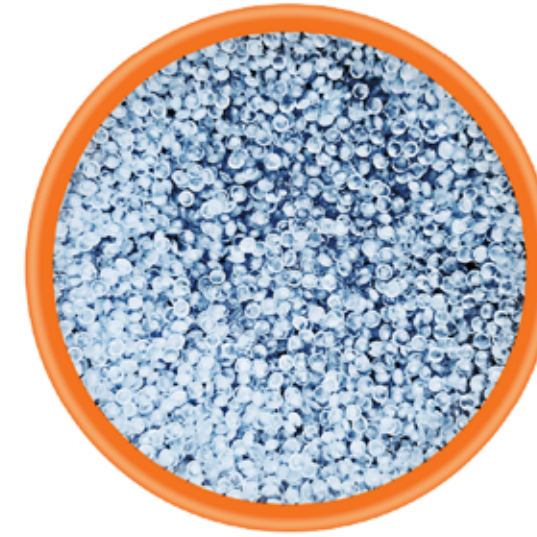
# CROWN<sup>®</sup> SUSTAINABLE PRODUCTS

## INNOVATING FOR A BETTER TOMORROW

CROWN Asia Chemicals Corporation offers a diverse portfolio of 16 innovative brands that cater to the needs of various industries, from construction and telecommunications to manufacturing and beyond. Each product is thoughtfully designed to uphold our commitment to quality, safety, and sustainability. By integrating advanced technology and adhering to international standards, CROWN products contribute to achieving the United Nations Sustainable Development Goals (UN SDGs). From fostering sustainable infrastructure and innovation (SDG 9) to promoting environmental responsibility through energy-efficient and eco-friendly materials (SDG 13), CROWN continues to drive meaningful impact while empowering communities and businesses to build a sustainable future together.



# CROWN<sup>®</sup> PVC COMPOUNDS



**RIGID**



**SOFT**

## PROGRESS THRU QUALITY

CROWN Asia Chemicals Corporation has a rich legacy rooted in the introduction of its first product, **CROWN PVC Compound**, in 1989. Celebrating 35 years of excellence, this pioneering product established CROWN's reputation as a trusted partner in the highly competitive plastic manufacturing industry.

Our PVC compounds, branded as the **CROWN Petrovin** and **CROWN Tecnovinyl**, are known for their high-grade quality and versatility, catering to diverse applications across commercial, construction, and telecommunication industries. Certified under ISO 9001:2015, these compounds and pellets support the production of essential products, including wires and cables, IC tubings, window and door profiles, container packaging, sandals and footwear, and shrink-pack films.

Manufactured with premium virgin materials and overseen by technical experts in chemical science, **CROWN PVC Compounds** meets the environmental standards. They deliver flexibility and reliability,

addressing the unique demands of various applications. Our **CROWN Petrovin** and **CROWN Tecnovinyl** brands offer more than 100 grades of PVC compounds to cater to the needs of other plastic manufacturers, with a production capacity of more than 1,500 metric tons per year.

Driven by a commitment to continuous improvement, our research team works tirelessly to adapt to the latest market developments. The CROWN Compounds Division actively expands export operations into high-quality markets such as Japan and neighboring Asian countries. Through innovation and the supply of custom-made raw materials, we contribute to groundbreaking developments in the plastic manufacturing sector.

Aligned with Sustainable Development Goal 9: Industry, Innovation, and Infrastructure, CROWN remains steadfast in its dedication to environmental conservation while fostering industry advancements.





# CROWN PIPES

## PUTTING SAFETY AND QUALITY FIRST

CROWN Pipes the number one brand manufactured by CROWN Asia Chemicals Corporation. CROWN Pipes exemplify safety, quality, and sustainability in infrastructure solutions. Each product line is meticulously manufactured to meet stringent national and international standards, delivering enduring performance across various applications. The company's adherence to these standards highlights its dedication to excellence and reliability.

The minimal environmental impact of PVC pipes, coupled with their long-lasting durability and recyclability, aligns with Sustainable Development Goal (SDG) 12: Responsible Consumption and Production, further emphasizing CROWN Pipes' contribution to sustainable practices. By prioritizing safety and quality, CROWN Pipes actively advances the Sustainable Development Goals, establishing itself as a cornerstone of sustainable infrastructure solutions. As a testament to their impact, CROWN Pipes stands at the forefront of innovation and industry standards, embodying a commitment to excellence that extends beyond functionality to encompass broader societal and environmental goals.

CROWN Pipes are integral to numerous key infrastructure projects in the Philippines, including the Metro Manila Subway, the North-South Commuter Railway, the CALAX Extension, MRT-7, and the North Luzon Expressway Connector Road. These projects highlight the trust placed in CROWN Pipes for critical developments.

By delivering sustainable solutions, CROWN Pipes supports the development of resilient infrastructure, contributing to the nation's progress while upholding environmental stewardship. Their commitment to quality and sustainability ensures that they remain a preferred choice for developers and engineers aiming for excellence in their projects.

Here are the lists of the CROWN Pipes and fittings known in the construction industry.



# CROWN<sup>®</sup> SANITARY PIPES

(DWV) uPVC PIPES PNS-1950/SDR-34

## CHAMPIONING SUSTAINABLE INFRASTRUCTURE: DWV SOLUTIONS

CROWN Sanitary Pipes and Fittings, recognized as the premier choice for plumbing solutions, are fundamental to safeguarding public health and ensuring access to clean water and sanitation. Manufactured with precision and durability, these products are engineered to maintain the integrity of plumbing systems, preventing contamination and promoting hygienic living environments. CROWN Pipes' commitment to quality goes beyond just function; its products are pivotal in maintaining the health and well-being of individuals and communities, whether in homes, businesses, or public spaces.

In line with global sustainability goals, CROWN Sanitary Pipes contribute significantly to building resilient infrastructures. Designed to withstand flooding and other environmental challenges, these pipes play an essential role in fortifying communities against the impacts of climate change. As part of the drive toward sustainable cities and communities, CROWN Sanitary Pipes help to ensure that critical services, like clean water and sanitation, remain accessible to all. Through innovative technology and a focus on environmental responsibility, CROWN supports the development of infrastructure that is both sustainable and future-proof, directly advancing the achievement of the United Nations Sustainable Development Goal (SDG) 6—Clean Water and Sanitation for All.





# CROWN<sup>®</sup> PP-R PIPES

HOT AND COLD PIPES AND FITTINGS

## A COMPLETE LINE OF HOT AND COLD PIPES AND FITTINGS

As part of CROWN's commitment to sustainability, CROWN PPR Pipes and fittings provide durable, eco-friendly, and hygienic piping solutions that support sustainable infrastructure. Made from high-quality, recyclable materials, our PPR pipes help reduce environmental impact by minimizing waste and ensuring a long service life of over 50 years. Their corrosion-resistant, eco-friendly, and non-toxic properties guarantee the safe transport of potable water as microbial-resistant pipes, directly contributing to SDG 6 (Clean Water and Sanitation) by promoting access to safe and efficient water systems in homes, businesses, and industries.

By integrating energy-efficient production processes and using lead-free, food-grade materials, CROWN PPR Pipes and fittings align with SDG 12 (Responsible Consumption and Production), ensuring that our products support sustainable construction practices. Additionally, their high thermal resistance reduces energy consumption in water heating systems, promoting SDG 9 (Industry, Innovation, and Infrastructure) by enhancing the sustainability of modern buildings. Through innovation and responsible manufacturing, CROWN PPR Pipes remain a key part of our green initiatives, helping build a healthier, more sustainable future for communities and industries alike.

# CROWN<sup>®</sup> PRESSURE MAIN BLUE

DISTRIBUTION uPVC PIPES PNS-65

## ENSURING SUSTAINABLE WATER SUPPLY AND ECONOMIC GROWTH

CROWN Pressure Main Blue Pipes are designed to withstand high-pressure water flow, ensuring a reliable and durable supply for irrigation systems, as well as supporting industrial, commercial, and agricultural sectors. Made with high-quality, corrosion-resistant materials, these pipes provide longevity and dependability in harsh environments, reducing the need for frequent maintenance and replacements. Their robust construction ensures that water flows efficiently across extensive networks, supporting the growth of agricultural practices and economic development in key industries. With their ability to maintain high water pressure over long distances, CROWN Pressure Main Blue pipes contribute directly to the sustainability of water infrastructure, crucial for agricultural productivity and industrial growth.

These qualities make CROWN Pressure Main Blue pipes a cornerstone in fostering sustainable economic growth in sectors that depend on efficient water distribution. The product's resilience to environmental challenges and its role in reducing water waste align with the United Nations Sustainable Development Goal (SDG) 6—Clean Water and Sanitation and SDG 2—Zero Hunger. By supporting irrigation systems and water supply networks, CROWN Pressure Main Blue pipes help ensure water access for agricultural development, which is vital to food security and the economy, while advancing efforts toward sustainable water management and resource conservation.





# CROWN<sup>®</sup> BLUE

uPVC POTABLE PIPES AND FITTINGS PNS-65

## FACILITATING CLEAN WATER ACCESS AND PROMOTING PUBLIC HEALTH

CROWN Blue Pipes are specifically engineered to ensure clean, safe water access for communities, promoting public health and hygiene. Made with non-toxic, food-grade materials, these pipes are resistant to contaminants, preserving water quality throughout its journey from source to tap. Their advanced design ensures that the water remains free from external pollutants, ensuring the health and safety of individuals. With a high resistance to corrosion and leakage, CROWN Blue pipes maintain water integrity over time, providing consistent, uninterrupted access to clean drinking water, a critical factor in preventing waterborne diseases.

CROWN Blue pipes are integral in supporting the achievement of the United Nations Sustainable Development Goal (SDG) 3—Good Health and Well-Being, as well as SDG 6—Clean Water and Sanitation. By facilitating the safe distribution of drinking water, these pipes directly contribute to improving public health and reducing the spread of water-related illnesses. Their reliable performance also ensures long-term access to clean water, a key component of sustainable development. CROWN Blue exemplifies the company's commitment to holistic sustainability, emphasizing environmental responsibility and the well-being of communities.



# CROWN<sup>®</sup> HDPE PIPES

HIGH DENSITY POLYETHYLENE PIPES PNS-4427

## DURABLE, HIGH-PRESSURE PERFORMANCE

CROWN HDPE Pipes and Fittings are designed for durability and high-pressure performance, making them an essential component of sustainable infrastructure. With lengths ranging from 6 to 300 meters and diameters between 20mm and 800mm, these pipes provide exceptional strength and flexibility due to their high-density polyethylene composition. Their resistance to corrosion, chemicals, and UV radiation ensures long-term reliability, while their lightweight design simplifies transportation and installation. Additionally, CROWN HDPE pipes offer superior flow characteristics, making them ideal for various applications, including water supply, sewerage, drainage, gas distribution, industrial processes, and geothermal systems. Their efficiency and durability contribute to resource conservation and improved environmental management.

As part of CROWN's commitment to sustainability, CROWN HDPE pipes actively support SDG 6 (Clean Water and Sanitation) by facilitating safe and efficient water distribution and wastewater management. Moreover, their recyclability reinforces SDG 12 (Responsible Consumption and Production), as used pipes can be repurposed into new products, reducing plastic waste and reliance on virgin materials. This sustainable recycling process aligns with circular economy principles, promoting responsible resource use and long-term environmental protection. By offering a sustainable, high-performance piping solution, CROWN HDPE contributes to building resilient infrastructure while fostering a greener, more sustainable future.





# CROWN ELECTRICAL PIPES

uPVC ELECTRICAL CONDUIT PIPES PNS-14

## ENSURING SAFETY AND RELIABLE ELECTRICAL INFRASTRUCTURE

CROWN Electrical Pipes and Fittings, renowned for their durability and flame-retardant properties, are vital in safeguarding electrical systems across residential, commercial, and industrial environments. These products provide a high level of protection for electrical wiring, preventing potential hazards such as fires, electrical malfunctions, and damage. With a focus on quality and performance, CROWN Electrical Pipes ensure the reliability of electrical infrastructure, supporting the safe operation of critical systems and enhancing the quality of life in various sectors.

In alignment with global sustainability goals, CROWN Electrical Pipes play an essential role in fostering the development of resilient infrastructure. By enhancing the safety and longevity of electrical systems, these pipes contribute directly to the creation of sustainable cities and communities, an important aspect of the United Nations Sustainable Development Goal (SDG) 9—Industry, Innovation, and Infrastructure. Their advanced engineering promotes the longevity and efficiency of electrical systems, reducing the need for frequent replacements and minimizing environmental impact. Through these innovations, CROWN Pipes supports the construction of reliable and sustainable infrastructure that meets the needs of today and the challenges of tomorrow.

# CROWN TELECOM

POWER & COMMUNICATION DUCT ASTM F512 & NEMA TC-6/TC-8

## SUSTAINABLE TELECOM SOLUTIONS

CROWN Telecom products are designed to safeguard wires and cables for digital communication systems, ensuring uninterrupted access to essential services in homes, businesses, and industries. Their robust construction makes them resistant to wear and tear, offering long-lasting protection against environmental hazards and physical damage. This durability helps reduce the need for frequent replacements, making them a cost-effective and eco-friendly solution.

By prioritizing sustainability, CROWN Telecom aligns with SDG 9—Industry, Innovation, and Infrastructure, ensuring the integrity of electrical and communication systems while supporting the development of resilient infrastructure. These products not only protect vital communication networks but also support SDG 11—Sustainable Cities and Communities, contributing to the creation of safer, more sustainable urban spaces. Through responsible production, CROWN Telecom products play a significant role in reducing waste and promoting responsible consumption, while enhancing the reliability and safety of modern digital communication systems.





# CROWN SOLVENT CEMENT

**STRONG, SECURE, AND  
SUSTAINABLE BONDING FOR PVC PIPES**



CROWN Solvent Cement provide strong, reliable, and leak-proof joints for PVC pipes and fittings, ensuring efficient fluid transport in various applications. With its fast-setting formulation, it allows for quick and secure bonding, reducing installation time and labor costs while maintaining high durability under pressure and temperature fluctuations. The waterproof and chemical-resistant properties of CROWN Solvent Cement prevent leaks, conserve water, and minimize the risk of contamination, supporting Sustainable Development Goal (SDG) 6: Clean Water and Sanitation by promoting the safe and sustainable management of water resources.

Beyond performance, CROWN Solvent Cement is designed with environmental responsibility in mind. Its eco-friendly formulation adheres to stringent safety standards, ensuring low VOC emissions for improved indoor air quality. By enhancing the long-term durability of piping systems, it reduces the need for frequent repairs or replacements, thereby minimizing material consumption and waste generation. This commitment to responsible resource use aligns with SDG 12: Responsible Consumption and Production, emphasizing sustainable product life cycles. Through compliance with international standards, ease of application, and long-lasting performance, CROWN Solvent Cement exemplifies sustainability and efficiency, reinforcing CROWN's dedication to integrating eco-conscious solutions into its product offerings.



# CROWN PVC THERMAL ROOFING

uPVC AND ASA LAMINATED

**YOUR ALL-WEATHER  
COOL ROOFING SOLUTION**



**uPVC ROOFING**  
(Unplasticized Polyvinyl Chloride)

**CROWN CorrWave**  
**CROWN StrongRib**

**ASA LAMINATED uPVC ROOFING**  
(Acrylic Styrene Acrylonitrile)

**CROWN SmartRoof**  
**CROWN HeatProtect**  
**CROWN TileTech**

At CROWN, sustainability is at the core of our product innovation. Our CROWN Thermal Roofing is designed to provide an eco-friendly, energy-efficient solution for residential, commercial, and industrial applications. Made from high-quality PVC, it effectively resists UV radiation, reducing heat absorption and helping maintain cooler indoor temperatures. This leads to lower energy consumption, minimizing the need for air conditioning and contributing to reduced greenhouse gas emissions. Its durability and long lifespan further support sustainable construction by reducing material waste and the environmental impact of frequent roof replacements.

As part of CROWN's commitment to sustainability, CROWN Thermal Roofing aligns with the United Nations Sustainable Development Goals (SDGs), particularly SDG 7 (Affordable and Clean Energy) and SDG 13 (Climate Action) by promoting energy efficiency and reducing carbon footprints. Additionally, its non-flammable and resilient properties contribute to building safer, more sustainable communities, supporting SDG 11 (Sustainable Cities and Communities). By integrating innovative solutions like CROWN Thermal Roofing, we continue to drive responsible and sustainable progress in the construction industry.





# CROWN SEPTIC-TECH

POLYPROPYLENE (PP)

## AN ENVIRONMENT-SAFE SEPTIC TANK SOLUTION



CROWN Septic-Tech provides an environmentally safe and compliant septic tank system, aligning with DENR Administrative Order No. 35, Series of 1990. Engineered for durability and structural integrity, it features a flexible 2-chamber or 3-chamber system with an optional CROWN Sewage Treatment Filter System, ensuring effluent discharge meets stringent environmental standards. Constructed from heavy-duty plastic, the tank withstands heavy loads and has a compact 1,200-liter capacity, making it ideal for residential and compact housing projects.

Designed for easy installation and maintenance, CROWN Septic-Tech requires only one to two workers for setup and includes hygienic manhole covers for convenient access. Its compartmentalized system enhances waste digestion and filtration, promoting optimal hygiene and environmental protection. The CROWN Sewage Treatment Filter System, tested by DENR-accredited laboratories, guarantees compliance with environmental regulations. Cost-effective compared to traditional septic tanks, CROWN Septic-Tech is a practical, sustainable choice for modern waste management.

### Crown Sewage Treatment Filter System Maximum hygiene protection system for environmental safety.



# CAC

*Your Clean and Comfort Essentials*

## YOUR TOILET AND BATH ESSENTIALS



CAC Toilet & Bath Essentials offers a premium selection of water closets and washbasins (Spring and Summer Series), designed for modern aesthetics, space efficiency, and sustainability. Manufactured with Grade-A quality and ICC certification, these products comply with PNS 156:2000 standards, ensuring superior performance and safety. The water closets feature a dual-flush system, reducing water consumption, while the stain-resistant washbasins offer effortless maintenance. Additionally, the Spring Series Water Closet includes a soft-close toilet seat for enhanced comfort.

CAC products are designed for easy installation and leak-proof connections. The Basin Drain and Bottle Trap come with step-by-step installation guides, ensuring secure fittings and long-lasting reliability. Thoughtfully engineered for safe and hygienic bathroom environments, CAC promotes sustainable and comfortable living by integrating water-saving and high-quality solutions into everyday essentials.



# CROWN® NEW INNOVATIVE PRODUCTS



## SUSTAINABLE SOLUTIONS FOR WATER AND WASTE MANAGEMENT

CROWN introduces its innovative products, including the CROWN Grease Trap, HDPE Double Wall, and HDPE Structured Wall pipes, designed to promote sustainability and contribute to UN Sustainable Development Goals. The CROWN Grease Trap efficiently separates grease from wastewater, supporting SDG 6—Clean Water and Sanitation by preventing contamination of water systems and improving waste management in commercial and food industries.

The HDPE Double Wall and HDPE Structured Wall pipes offer durable, corrosion-resistant solutions for fluid and waste transportation. Made from recycled HDPE, these pipes reduce waste and support SDG 12—Responsible Consumption and Production. These products contribute to the development of resilient infrastructure, ensuring reliable water management while promoting sustainability through reduced environmental impact.



# CROWN® GREASE TRAP

STRENGTH, QUALITY, GREASE PROTECTION

## STRENGTH, QUALITY, KITCHEN SHIELD



The CROWN Grease Trap, the ultimate grease management solution, is the latest innovative product released by CROWN to the market, specifically designed for homes, restaurants, commercial kitchens, and food service facilities. Engineered with innovation and durability, this product protects plumbing systems, ensuring smooth operations while maintaining high standards of hygiene and efficiency.

With its advanced interceptors, the CROWN Grease Trap minimizes clogs and blockages caused by grease buildup, saving you from costly repairs and downtime. Its user-friendly design simplifies maintenance, enabling quick and hassle-free grease removal, making the cleaning process more efficient. Beyond protection and convenience, it offers significant cost savings by preventing expensive plumbing issues and reducing service calls.

Aligned with the United Nations Sustainable Development Goals (SDGs), particularly Goal 6: Clean Water and Sanitation and Goal 12: Responsible Consumption and Production, the CROWN Grease Trap supports environmental conservation by preventing grease from contaminating waterways. This sustainable solution not only safeguards plumbing infrastructure but also helps reduce the environmental impact of food service operations, contributing to a cleaner and healthier planet for future generations.





# CROWN® HDPE DOUBLE WALL PIPES

HIGH DENSITY POLYETHYLENE PIPES  
DIN 16961 • ASTM F894 • ASTM F449 • ASTM F2648

## RELIABLE FLOW SOLUTIONS FOR ANY ENVIRONMENT

CROWN HDPE Double Wall Corrugated Pipes offer a robust and eco-friendly solution designed for reliable flow and drainage across various applications, including agricultural drainage, sewage systems, and stormwater management. Built with durability and sustainability in mind, virgin materials and feature a smooth interior that ensures optimal hydraulic performance. The design minimizes the environmental impact, offering enhanced longevity, resistance to abrasion, and reduced maintenance costs, all while promoting eco-conscious infrastructure development.

Aligned with the United Nations Sustainable Development Goals (SDGs), particularly SDG 6 (Clean Water and Sanitation) and SDG 12 (Responsible Consumption and Production), the CROWN HDPE Double Wall Corrugated Pipes help reduce carbon emissions and resource consumption due to their recyclability and long service life. Their low thermal

conductivity and resistance to root intrusion further enhance sustainability by supporting precise temperature control and minimizing the need for frequent repairs. Through their flexible, lightweight design, these pipes ensure ease of installation, contributing to reduced labor costs and faster project completion, which is critical for sustainable urban development.

Incorporating CROWN HDPE Double Wall Corrugated Pipes in infrastructure projects not only ensures the reliability and efficiency of drainage systems but also contributes to the global effort of creating a more sustainable and eco-friendly future. By reducing environmental impact and supporting responsible production practices, CROWN continues to align with its commitment to advancing sustainable development and fostering resilience in the face of changing environmental challenges.



# CROWN® STRUCTURED WALL HDPE PIPES

HIGH DENSITY POLYETHYLENE PIPES  
DIN 16961 • ASTM F894 • ASTM F449 • ASTM F2648

## DURABLE STRENGTH FOR HIGH-PRESSURE PERFORMANCE

CROWN Structured Wall HDPE Pipe represents a breakthrough in sustainable infrastructure solutions, offering unmatched durability. Made from high-density polyethylene, these pipes are designed to withstand extreme environmental conditions, ensuring long-term reliability in a wide range of industries, from wastewater systems to hydropower projects. Their ability to resist corrosion, abrasion, and weather stress not only guarantees longevity but also minimizes maintenance, making them a cost-effective and eco-friendly choice for infrastructure development.

Aligned with the United Nations Sustainable Development Goals (SDGs), particularly SDG 9 (Industry, Innovation, and Infrastructure) and SDG 12 (Responsible Consumption and Production), the CROWN Structured Wall HDPE Pipe contributes to sustainable development by reducing the need for

frequent repairs, minimizing resource consumption, and offering a long lifecycle that supports efficient infrastructure projects. With recyclable materials and a design that reduces environmental impact, these pipes foster a cleaner, greener future while providing the strength and reliability needed for critical projects like stormwater management, sewer systems, and irrigation.

By incorporating advanced technology, CROWN ensures that these pipes meet international standards, driving innovation and improving the infrastructure landscape. Their versatility, eco-friendliness, and cost-effectiveness align with our commitment to responsible production and environmental preservation, making CROWN Structured Wall HDPE Pipe an essential product for the sustainable growth of communities and industries worldwide.





# CROWN®

## Eco-Friendly Products

### Sustainable Solutions FOR A GREENER FUTURE

CROWN is committed to reducing environmental impact through the creation of innovative, eco-friendly products. Two standout examples are the CROWN Enduro and CROWN Electrical Wire and Cable. Both are crafted from recycled materials, reducing waste and contributing to a circular economy. The CROWN Enduro pipes provide durable, cost-effective solutions for mass housing projects, while the CROWN Electrical Wire and Cable ensures the safety and reliability of electrical systems. By using recycled materials in their production, these products help minimize the need for new resources, supporting sustainability efforts while maintaining high performance and quality standards.

Through this initiative, CROWN not only enhances infrastructure but also plays a pivotal role in reducing waste and promoting responsible consumption.



# CROWN® ELECTRICAL WIRE & CABLE PROTECTOR

SAFEGUARD AND PROTECT



## PROTECTOR FOR SUPERIOR CABLE SOLUTIONS

CROWN Electrical Wire and Cable Protector is a sustainable solution designed to safeguard wires and cables from potential damage in residential, commercial, and industrial environments. Constructed from durable, recycled materials, this product minimizes waste and contributes to a more sustainable future. The CROWN Wire and Cable Protector effectively shields wires and cables from hazards such as heavy foot traffic, furniture, and equipment, ensuring the safety and security of electrical systems in homes, businesses, and industrial settings. With its user-friendly installation process, the protector seamlessly integrates into various environments, offering an ideal solution for organizing spaces while promoting environmental responsibility.

Engineered to withstand heavy pressure, the CROWN Wire and Cable Protector is resistant to damage from strollers, pushcarts, and even forklifts. Available in a range of sizes and lengths, it caters to specific needs across diverse settings. By using recycled materials in its production, this product not only provides a reliable and long-lasting solution but also supports sustainability by reducing waste and conserving resources. Aligned with the United Nations Sustainable Development Goals (SDGs), particularly SDG 9—Industry, Innovation, and Infrastructure and SDG 11—Sustainable Cities and Communities, the CROWN Wire and Cable Protector contributes to the development of resilient infrastructure and promotes safer, more sustainable urban environments.



# CROWN ENDURO

SANITARY GRAY PIPES

## SUSTAINABLE AND RESILIENT PIPE SOLUTIONS

CROWN Enduro exemplifies the principles of sustainability and circular economy by offering durable and cost-effective pipe solutions, particularly in mass housing projects that cater to large populations. Engineered from recycled materials, this product minimizes waste and resource consumption, contributing to a more sustainable future. By reducing the frequency of replacements, CROWN Enduro extends the lifespan of infrastructure, reducing overall expenses and the environmental impact over time. Its long-lasting performance supports sustainable housing development, making it a crucial component in meeting both essential housing needs and broader sustainability goals.

Incorporating recycled materials into its production, CROWN Enduro actively contributes to waste reduction and sustainable resource management. This green initiative aligns with CROWN's commitment to environmental responsibility and economic viability. Through efficient manufacturing and recyclability, CROWN Enduro helps further the achievement of Sustainable Development Goal 12—Responsible Consumption and Production, promoting responsible manufacturing practices and reducing environmental impact while providing high-quality solutions for construction, infrastructure, and beyond.



At CROWN, we believe that strong partnerships are essential in driving sustainable development and fostering economic growth. By collaborating with key players in the construction and home improvement industry, we ensure that our high-quality, eco-friendly building materials are accessible to more communities. These partnerships directly support the United Nations Sustainable Development Goals (SDGs), particularly SDG 9 (Industry, Innovation, and Infrastructure) and SDG 11 (Sustainable Cities and Communities) by providing innovative solutions that enhance infrastructure resilience while minimizing environmental impact. Through these alliances, CROWN not only strengthens its market presence but also contributes to creating a more sustainable future for the Philippines.





## ALLHOME: ONE-STOP SUSTAINABLE SOLUTIONS FOR BUILDERS

AllHome is a revolutionary home improvement retailer, providing a one-stop-shop solution for builders, contractors, and homeowners. Our partnership with AllHome ensures that CROWN's eco-friendly building materials are within easy reach of consumers, supporting responsible consumption and sustainable construction. This alliance aligns with SDG 12 (Responsible Consumption and Production) by encouraging the use of recycled and sustainable materials, reducing waste, and promoting more resource-efficient building solutions.

By making our products available through AllHome, we empower individuals and businesses to choose greener alternatives, ultimately reducing environmental impact and supporting the development of sustainable communities. As urban expansion continues, ensuring that sustainable construction materials are easily accessible is crucial to meeting the growing demand for housing and commercial developments. With AllHome's presence in strategic locations nationwide, CROWN extends its reach to a wider audience, driving growth while reinforcing its commitment to sustainability.

## BUILDERS WAREHOUSE: SUPPORTING URBANIZATION & GROWTH

Builders Warehouse serves as a trusted provider of construction materials for professionals and businesses and one of the biggest depots in North Luzon, making it an essential partner in CROWN's mission to drive sustainable urbanization. By supplying our innovative, high-performance products through Builders Warehouse, we support the construction of resilient infrastructure that meets the demands of rural and emerging cities. This aligns with SDG 11, as it enables communities to build sustainable, efficient, and environmentally friendly structures that contribute to urban growth and development.

Through this partnership, we not only enhance accessibility to premium building materials but also reinforce the importance of sustainability in the construction industry. By integrating sustainable practices into mainstream construction, we contribute to SDG 9 by fostering innovation and promoting long-term economic resilience in the building sector.



### WILCON DEPOT: EXPANDING REACH THROUGH SUSTAINABILITY

Wilcon Depot is the Philippines' leading home improvement and construction supply retailer, known for its extensive nationwide presence and commitment to innovation. Partnering with Wilcon Depot allows CROWN to offer its sustainable, high-quality products to a broader market, ensuring that builders, developers, and homeowners have access to durable and environmentally responsible materials. This collaboration aligns with SDG 9, as it supports the advancement of infrastructure and innovation, enabling the construction of sustainable and disaster-resilient structures across the country.

Furthermore, Wilcon Depot's dedication to environmental responsibility and corporate sustainability aligns perfectly with CROWN's mission. Wilcon Depot provides an essential platform for educating consumers, developers, and contractors about the benefits of using eco-friendly solutions. By working together, we not only expand product availability but also promote responsible consumer choices that lead to more energy-efficient, waste-reducing, and long-lasting construction projects. With Wilcon's wide reach and CROWN's industry-leading products, we empower communities to build smarter, safer, and more sustainable environments, contributing to SDG 11 by fostering better-planned urban development.



### NATIONWIDE DEALERS & PROVINCIAL DEPOTS: REACHING THE FARTHEST ISLANDS

CROWN's commitment to nationwide accessibility and supporting small businesses extends beyond major retail partnerships. By working closely with dealers and provincial depots across the Philippines' diverse regions and islands, we ensure that even the most remote communities have access to reliable, sustainable building solutions. This commitment aligns with SDG 10 (Reduced Inequalities) by bridging the gap between urban and rural areas, providing essential materials for infrastructure development in less accessible locations.

Expanding our distribution network strengthens local economies by empowering small businesses and dealers to participate in sustainable trade and economic activities. Additionally, by making our eco-friendly products available throughout the country, we enable communities to build safer, more durable structures that can withstand natural disasters, reinforcing SDG 11's goal of creating resilient urban and rural settlements. Our partnership with dealers and provincial depots ensures that no community is left behind in the journey toward sustainable development.





# DEVELOPERS & CONTRACTORS: BUILDING SUSTAINABLE COMMUNITIES

**WILCON** **DEPOT**



**AllHome**  
One-stop shop for *your* home

**HOMEIDEAS**  
**Superstore**  
Your Home, your Ideas, Your Superstore!



Developers and contractors play a crucial role in shaping the future of sustainable infrastructure, and CROWN is proud to be a trusted partner in this sector. By working closely with top developers and contractors in the country, we provide them with access to high-quality, sustainable construction materials that meet industry standards while minimizing environmental impact. This collaboration directly contributes to SDG 9, fostering industry-wide innovation and promoting the use of durable, resource-efficient materials in large-scale projects.

CROWN's partnerships with top developers in the country ensure that sustainability is embedded in the design and execution of residential, commercial, and industrial projects. By prioritizing green building solutions, we help create sustainable communities, reducing carbon footprints and enhancing overall urban livability. Our commitment to eco-friendly, long-lasting materials also ensures that community's benefit from safe, durable, and cost-effective infrastructure, further advancing SDG 11's vision for sustainable cities and communities.

Through these strategic partnerships, CROWN is expanding its market reach while making a lasting impact on sustainability, economic growth, and community development. By ensuring that our innovative, environmentally responsible products are widely available, we help build a future where sustainable infrastructure is accessible to all.

Our alliances with major retailers, dealers, and industry leaders drive business growth while reinforcing our commitment to environmental stewardship and responsible consumption.

As we continue to expand our partnership network, CROWN remains dedicated to delivering high-quality solutions that support sustainable development across the Philippines. Through these collaborative efforts, we contribute to nationwide progress while ensuring that future generations inherit a resilient, sustainable, and eco-conscious built environment.



# CROWN<sup>®</sup> SUSTAINABLE CARE



Introducing CROWN SUSTAINABLE CARE:

## CARING FOR TOMORROW WITH SUSTAINABLE SOLUTIONS

At CROWN Asia Chemicals Corporation, sustainability is at the heart of everything we do. As we celebrate 35 years of excellence, we are proud to unveil CROWN Sustainable Care: Caring for Tomorrow with Sustainable Solutions —our forward-thinking initiative aligned with the United Nations Sustainable Development Goals (UN SDGs). This dedicated program reflects our commitment to driving positive change in the world by focusing on key areas that matter most: the environment, education, partnerships, health and well-being, and good governance.

Our journey towards sustainability goes beyond adopting best practices. It's about creating lasting impact, not only within our operations but also in the communities we serve. CROWN Sustainable Care is our promise to the future—a sustainable approach that ensures we leave a legacy of positive influence for generations to come.







# OUR PILLARS OF SUSTAINABILITY



## 1. NURTURING THE ENVIRONMENT

As a responsible corporate citizen, we recognize the importance of preserving the environment for future generations. CROWN Sustainable Care focuses on:

**Waste Management Programs** that encourage recycling, reduce waste, and promote sustainability in every aspect of our business.

**Energy Efficiency Projects** aimed at reducing our carbon footprint and conserving energy across our operations.

**Tree Planting Initiatives** to combat climate change by expanding green spaces.

## 2. EMPOWERING EDUCATION

We believe that education is the cornerstone of a sustainable future. CROWN Sustainable Care is committed to:

**School Partnerships** that support the development of better learning environments and educational resources for the next generation.

**Educational Workshops** that equip our employees and communities with the knowledge and skills to adopt more sustainable practices in their daily lives.

## 3. BUILDING STRONG PARTNERSHIPS

No one can achieve sustainability alone. CROWN Sustainable Care thrives on collaboration:

**Community Engagement** fosters relationships that support local needs and challenges, enabling us to make a real difference.

**Partnerships with Professional Groups and NGOs** expand the reach of our efforts, allowing us to amplify the positive impact of our initiatives.

**Corporate Alliances** with other businesses further advance our sustainability objectives, driving collective action toward shared goals.

## 4. PROMOTING HEALTH AND WELL-BEING

We understand that true sustainability extends beyond the environment. It includes the health and well-being of our people and communities:

**Blood Donation Drives** that support local blood banks and help save lives.

**Wellness Programs** that prioritize the physical and mental health of our employees and the broader community.

**Support for Healthcare Infrastructure** through donations that help improve local healthcare facilities and services.

## 5. UPHOLDING GOOD GOVERNANCE

Sustainability is built on a foundation of trust. CROWN Sustainable Care emphasizes:

**Transparency and Accountability** to ensure we operate in a way that is open, honest, and responsible.

**Ethical Practices** that guide every decision we make and every relationship we build, establishing us as a leader in corporate governance.









# DRIVING SUSTAINABILITY THROUGH DIGITAL PROMOTION

At CROWN Asia Chemicals Corporation, sustainability is at the heart of everything we do. As we celebrate 35 years of excellence, we are proud to unveil CROWN Sustainable Care: Caring for Tomorrow with Sustainable Solutions—our forward-thinking initiative aligned with the United Nations Sustainable Development Goals (UN SDGs). This dedicated program reflects our commitment to driving positive change in the world by focusing on key areas that matter most: the environment, education, partnerships, health and well-being, and good governance.

Our journey towards sustainability goes beyond adopting best practices. It's about creating lasting impact, not only within our operations but also in the communities we serve. CROWN Sustainable Care is our promise to the future—a sustainable approach that ensures we leave a legacy of positive influence for generations to come.

## ENGAGING SOCIAL MEDIA CAMPAIGNS

We utilize platforms such as Facebook, Instagram, LinkedIn, and Twitter to share our sustainability initiatives, best practices, and corporate social responsibility (CSR) projects. By creating interactive content, including videos, infographics, and employee testimonials, we engage our audience and encourage participation in our green advocacy.

## SUSTAINABILITY-FOCUSED CONTENT MARKETING

Our commitment to sustainability is reflected in our digital content. We created a page on our website solely intended for sustainability and CSR. We publish blogs, articles, and whitepapers highlighting eco-friendly innovations, responsible business practices, and industry-wide sustainability efforts.

## INFLUENCER & COMMUNITY ENGAGEMENT

Partnering with sustainability advocates and industry leaders, CROWN extends its reach and impact. We collaborate with eco-conscious organizations to share real-life applications of our sustainable products and environmental related activities that we posted on social media. Through user-generated content and community participation, we foster a collective movement toward environmental responsibility.

## DIGITAL ADVERTISING FOR GREEN AWARENESS

Our targeted online ad campaigns emphasize the benefits of using eco-friendly products and services. We employ AI-driven ad optimization to ensure energy-efficient digital marketing, reducing unnecessary carbon footprints while maximizing audience engagement.

## CORPORATE SUSTAINABILITY WEBSITE & DIGITAL TRANSPARENCY

Our website serves as a central hub for showcasing our sustainability commitments, goals, and progress. We provide stakeholders with transparency through our Sustainability Reports uploaded real time on our webpage ensuring accountability in our journey toward sustainable development.

Contributing to the UN Sustainable Development Goals (SDGs) Through our digital sustainability initiatives, CROWN aligns with key UN SDGs:

- SDG 4 (Quality Education): Providing accessible digital learning for sustainability awareness.
- SDG 12 (Responsible Consumption & Production): Promoting eco-conscious construction and infrastructure solutions.
- SDG 13 (Climate Action): Advocating for climate action through digital storytelling and sustainable business practices.



## A DIGITAL-DRIVEN FUTURE FOR SUSTAINABILITY

As CROWN continues to innovate and lead, we remain steadfast in our mission to promote sustainability through digital means. By harnessing the power of technology, we expand our reach, foster meaningful engagement, and contribute to a more sustainable future—one digital step at a time.



# CROWN® ENVIRONMENTAL PERFORMANCE

## DRIVING ENVIRONMENTAL EXCELLENCE

### 1. RESOURCE MANAGEMENT

CROWN remains committed to minimizing environmental impacts through responsible resource management, effective waste reduction programs, and adherence to environmental regulations. We recognize that environmental stewardship is not just a corporate responsibility but a fundamental part of our identity and purpose. By integrating sustainable practices across our operations, we aim to protect natural resources, reduce our carbon footprint, and promote ecological balance.

#### ENERGY CONSUMPTION AND REDUCTION

In the reporting period, our organization recorded the following:

DISCLOSURE	QUANTITY	UNITS
Energy consumption (renewable gasoline)	0	GJ
Energy consumption (gasoline)	41,654.76	liters
Energy consumption (LPG)	231 (21 tanks)	kg
Energy consumption (diesel)	85,121.34	liters
Energy consumption (electricity)	2,355,253.50	kWh

Efficient energy consumption is crucial to controlling operational costs and reducing environmental impact. For the company, this means lower expenses and improved sustainability credentials. For the community, reduced energy consumption lessens pollution, contributing to cleaner air and a healthier environment.

We have implemented initiatives aimed at reducing energy usage, resulting in the following reductions:

DISCLOSURE	QUANTITY	UNITS
Energy reduction (gasoline)	10,117.39	liters
Energy reduction (LPG)	0	kg
Energy reduction (diesel)	2,176.908	liters
Energy reduction (electricity)	2,308,384.00	kWh

Energy reduction initiatives demonstrate our commitment to sustainability, reducing our carbon footprint and operational costs. This benefits the community by mitigating climate change impacts, promoting public health, and supporting global environmental goals.

Our efforts align with UN SDG 7 (Affordable and Clean Energy), promoting energy efficiency and reducing our carbon footprint. These initiatives contribute to minimizing greenhouse gas emissions, supporting SDG 13 (Climate Action) by addressing climate change impacts.

#### WATER CONSUMPTION AND MANAGEMENT

Our water resource management efforts yielded the following figures:

DISCLOSURE	QUANTITY	UNITS
Water withdrawal	7,512.05	Cubic meters
Water consumption	6,231.57	Cubic meters
Water recycled and reused	3,690.77	Cubic meters

Effective water management ensures resource availability, reduces costs, and minimizes environmental impact. For the community, conserving water enhances supply resilience, protects natural ecosystems, and supports sustainable development.

As part of its sustainability efforts, CROWN has implemented a rainwater collection system for machine cooling processes, significantly reducing reliance on chemically treated water. By capturing and utilizing rainwater, we lessen demand on local water sources, reduce wastewater discharge, and minimize the environmental footprint of our cooling operations. This initiative also generates cost savings by lowering expenses associated with water treatment and procurement.





Our cooling rain harvester tanks—10 cubic meters in our Bulacan plant and 16 cubic meters in our roofing plant—enable us to repurpose collected rainwater efficiently, reducing operational costs and dependence on conventional water sources. To further enhance water management capabilities, we have also installed a stern tank with a 45-cubic meter capacity in the production area, along with a 7-cubic meter cooling water pit in the Compounds production area and a 10-cubic meter cooling tower in PPR. The stern tank serves as a buffer storage system, holding excess water when the cooling tower pit reaches full capacity, ensuring a continuous water supply for cooling operations and reducing water wastage.

These water storage solutions improve efficiency and sustainability by optimizing water usage while minimizing waste. By maintaining adequate water reserves, we prevent operational disruptions, reduce dependence on municipal water supplies, and strengthen overall resilience against water shortages. This system not only supports sustainable water use but also enhances responsible industrial water management.

By integrating rainwater harvesting into our sustainability framework, CROWN contributes to UN SDG 6 (Clean Water and Sanitation) by promoting efficient water use and UN SDG 12 (Responsible Consumption and Production) by minimizing resource wastage. This approach reflects our commitment to environmental responsibility and long-term sustainability promoting sustainable water management to ensure availability for current and future generations.

#### MATERIAL USAGE

DISCLOSURE	QUANTITY	UNITS
Materials used by weight or volume		
• Renewable	NA	kg/liters
• Non-renewable		kg/liters
Percentage of recycled input materials used to manufacture the organization's primary products and services	5.61	%

Using recycled materials reduces dependency on virgin resources, lowering costs and environmental degradation. This benefits communities by decreasing waste in landfills, reducing pollution, and fostering sustainable resource cycles.

Using recycled materials aligns with UN SDG 12 (Responsible Consumption and Production), focusing on reducing waste through sustainable resource management and promoting circular economy practices.

## 2. ECOSYSTEMS AND BIODIVERSITY

DISCLOSURE	QUANTITY	UNITS
Operational sites owned, leased, managed in, or adjacent to, protected areas and areas of high biodiversity value outside protected areas	NONE	
Habitats protected or restored	NONE	ha
IUCN <sup>17</sup> Red List Species and National Conservation List Species with Habitats in areas affected by operations	NONE	

Even with minimal direct impact, our responsible land use helps prevent biodiversity loss. For the community, preserving biodiversity ensures healthy ecosystems, which provide clean air, water, and natural resources vital for well-being.

While our current operations have minimal direct impact on biodiversity, our responsible practices contribute to the conservation goals of UN SDG 15 (Life on Land), emphasizing the importance of sustainable land management.

## 3. ENVIRONMENTAL IMPACT

Managing air emissions reduces health risks, improves air quality, and meets regulatory requirements. For the community, it fosters healthier living conditions, reducing respiratory illnesses and enhancing overall well-being.

Reducing air emissions is critical to improving air quality, supporting UN SDG 3 (Good Health and Well-being) by reducing pollutants that impact human health

#### AIR POLLUTANTS

DISCLOSURE	QUANTITY	UNITS
NO2	2.85	µg/Nm <sup>3</sup>
SO2	12.15	µg/Nm <sup>3</sup>
Persistent Organic Pollutants (POPs)	NA	kg
Volatile Organic Compounds (VOCs)	0.0	PPM
Hazardous Air Pollutants (HAPs)	NA	kg
Particulate Matter (PM)	37.45	µg/Nm <sup>3</sup>

#### SOLID AND HAZARDOUS WASTE MANAGEMENT

DISCLOSURE	QUANTITY	UNITS
Total Solid Waste Generated	1,549.48	kg
Reusable	0	kg
Recyclable	651.11	kg
Composted	441.31	kg
Incinerated	0	kg
Residuals/Landfilled	457.06	kg



## HAZARDOUS WASTE

DISCLOSURE	QUANTITY	UNITS
Total Weight of Hazardous Waste Generated	910.36	kg
Total Weight of Hazardous Waste Transported	493.7	kg

Proper waste management reduces environmental contamination, lowers disposal costs, and supports regulatory compliance. For communities, it ensures cleaner surroundings, reduces health hazards, and conserves natural resources.

Our waste management strategies support UN SDG 12 (Responsible Consumption and Production), aiming to reduce waste generation through recycling and responsible disposal.

## EFFLUENTS MANAGEMENT

DISCLOSURE	QUANTITY	UNITS
Total volume of water discharges	50.29	Cubic meters
Percent of wastewater recycled	5.84	%

Efficient effluent management prevents water pollution, protects aquatic ecosystems, and ensures compliance with environmental laws. This safeguards community water sources, supporting health and biodiversity.

One of our key initiatives is the Cooling Tower with a close loop flushing system, where we repurpose water in the cooling tower to minimize wastewater generation. By reusing water within the cooling system, we significantly reduce water wastage while maintaining operational efficiency. This practice not only conserves a vital resource but also decreases our overall environmental footprint, reinforcing our dedication to responsible water management.

Effluent management practices aim to protect water bodies, aligning with UN SDG 14 (Life Below Water) by preventing water pollution and supporting aquatic ecosystem health.

## 4. ENVIRONMENTAL COMPLIANCE

DISCLOSURE	QUANTITY	UNITS
Total amount of monetary fines for non-compliance with Environmental laws and/or regulations	0	Php
No. of non-monetary sanctions for non-compliance with Environmental laws and/or regulations	0	#
No. of cases resolved through dispute resolution mechanism	0	#

Our strong commitment to environmental compliance is reflected in the fact that CROWN has not received any notices of violation from the Department of Environment and Natural Resources (DENR). This achievement underscores our strict adherence to all environment-related rules and regulations, ensuring that we operate within the highest environmental standards. As a result, no cases or fines have been issued against the company, reinforcing our dedication to proactive environmental management.

Full compliance with environmental regulations reflects our commitment to ethical practices, risk management, and corporate responsibility. For communities, this fosters trust, ensures environmental protection, and promotes sustainable development.

Our full compliance with environmental regulations highlights our commitment to UN SDG 16 (Peace, Justice, and Strong Institutions), showing our dedication to strong governance and ethical business practices.

# OUR ECO-FRIENDLY PRACTICES

CROWN practices additional eco-friendly initiatives, including creative paper reuse strategies, recycling PVC fall downs, and optimizing production processes for efficiency and reduced environmental impact. These practices reflect our commitment to sustainability and support the achievement of the United Nations Sustainable Development Goals (SDGs).

One of our simple yet impactful initiatives is Creative Paper Reuse. At CROWN, we maximize the use of paper by employing strategies that minimize waste and promote sustainability. For instance, we utilize the unused side of old papers for drafts, ensuring that every sheet serves its full potential before disposal. This practice significantly reduces the demand for new paper, conserving natural resources and minimizing unnecessary consumption. Additionally, we repurpose scrap paper for notes and memos, extending the lifecycle of materials that would otherwise be discarded. This not only reduces the volume of waste generated but also fosters a culture of resourcefulness within our organization. The purpose of these efforts is to reduce deforestation and paper waste, thereby supporting SDG 12 (Responsible Consumption and Production). By promoting resource efficiency, we contribute to a more sustainable production cycle, lessen our environmental footprint, and inspire eco-conscious practices among employees. These small, consistent actions create a significant impact, reinforcing CROWN's commitment to environmental stewardship and sustainable development.

Another key initiative is Recycling PVC Fall Downs. In our production processes, fall-down pipes are collected and recycled into sustainable items designed for low-impact use. This practice reduces plastic waste, conserves valuable raw materials, and minimizes environmental pollution. By reintroducing these materials into the production cycle, we support a circular economy, which reduces the demand for new resources and lowers our overall environmental footprint. This initiative aligns with SDG 9 (Industry, Innovation, and Infrastructure), as it promotes sustainable industrial practices and encourages innovative approaches to resource efficiency.

We also prioritize Efficient Production Management by optimizing production capacity, minimizing errors, and reducing material waste, all while lowering energy consumption. This approach not only decreases production costs but also reduces greenhouse gas emissions associated with manufacturing activities. Through continuous improvement and adherence to best practices, we contribute to SDG 13 (Climate Action) by actively working to reduce our environmental impact and support global efforts to combat climate change.

Lastly, CROWN implements the Retrieval and Reuse of Jumbo Bags from our compounds' clients. Instead of discarding these jumbo bags after a single use, we collect and repurpose them, reducing packaging waste and promoting sustainable practices. This initiative reduces the amount of waste sent to landfills and supports circular economy principles, where materials are reused rather than disposed of. By minimizing packaging waste, we contribute to SDG 11 (Sustainable Cities and Communities), fostering cleaner, more sustainable urban environments and encouraging responsible waste management practices.

Through these eco-friendly practices, CROWN demonstrates that sustainability is not just a corporate goal but an integral part of our daily operations. Our commitment to environmental responsibility extends beyond compliance, reflecting our dedication to driving environmental excellence.



# ENVIRONMENTAL COMMITMENT

Our strategies focus on energy efficiency, water conservation, pollution prevention, and sustainable material usage. These efforts are supported by continuous monitoring, innovation, and employee engagement to ensure lasting positive impacts. We actively collaborate with communities, industry partners, and stakeholders to share knowledge, drive environmental awareness, and foster sustainable development.

Continuous improvement initiatives are in place to further enhance our sustainability performance in the coming years. These include setting ambitious environmental targets, adopting greener technologies, and strengthening our commitment to environmental governance. Through these actions, we contribute actively to the realization of the United Nations Sustainable Development Goals (SDGs), particularly those focused on climate action, clean water, responsible consumption, and life on land and below water.

At CROWN, driving environmental excellence is more than a goal—it is our pledge to future generations, ensuring that we leave a lasting, positive legacy for the planet and the communities we serve.



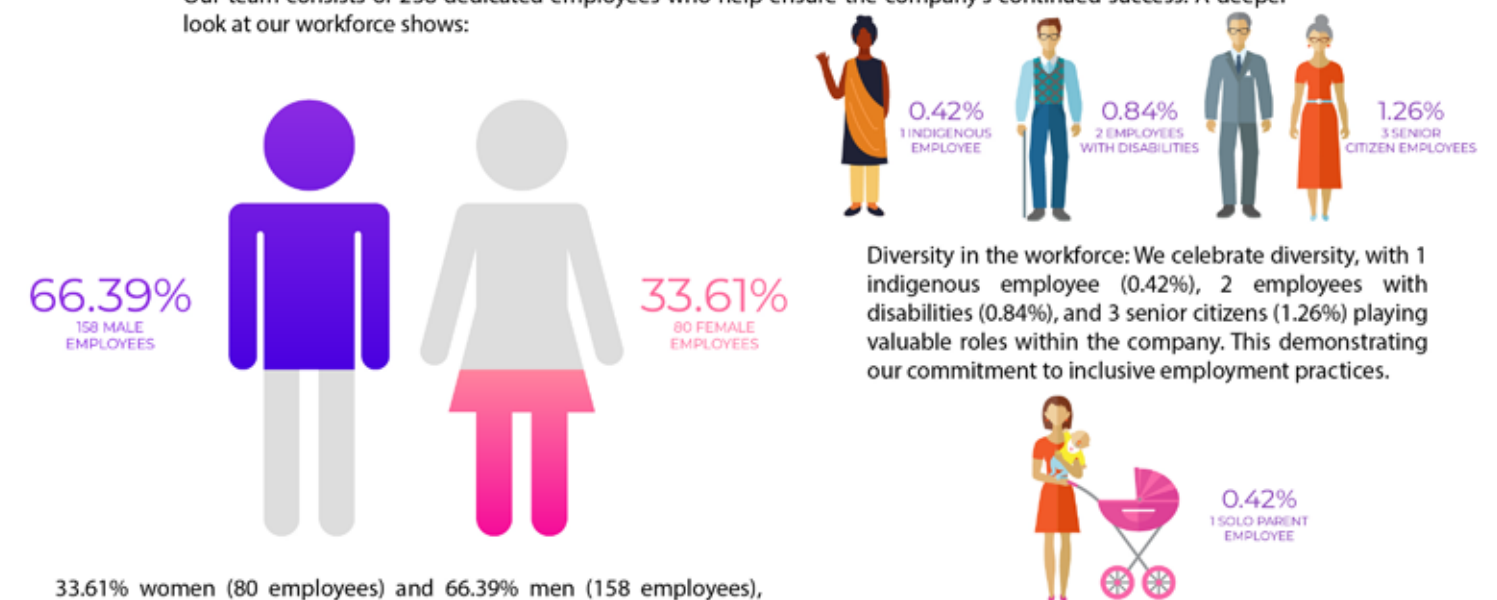
# CROWN® INVESTING IN PEOPLE EMPLOYEE MANAGEMENT

At the heart of our corporate sustainability strategy is a strong commitment to fair compensation, career advancement, diversity, and employee well-being. By fostering an inclusive, safe, and empowering workplace, we contribute to the broader objectives of the UN Sustainable Development Goals (SDGs), particularly:



## AN OVERVIEW OF OUR WORKFORCE

Our team consists of 238 dedicated employees who help ensure the company's continued success. A deeper look at our workforce shows:



33.61% women (80 employees) and 66.39% men (158 employees), reflecting the nature of our industry, where certain roles require physical labor that tends to attract more male employees.

We also support working parents, with 1 solo parent (0.42%) benefiting from our employment opportunities.



## FAIR COMPENSATION AND CAREER PROGRESSION

A transparent and equitable wage structure is essential for employee motivation and well-being. Below is a breakdown of our workforce in relation to wage distribution:



Our data shows that more than half (50.42%) of our employees earn above the minimum wage, reflecting our commitment to fair compensation and career advancement. Additionally, with 43.70% of employees in confidential and managerial roles, we demonstrate strong internal career progression and leadership development. Meanwhile, 36.55% of employees currently earn minimum wage, primarily consisting of recent graduates and employees with up to two years of experience, to whom we provide opportunities despite their limited tenure. This presents a potential area for wage enhancements and upskilling initiatives to support career growth and long-term development.

This provides an essential starting point for evaluating our workforce's current salary structure in comparison to industry benchmarks. By understanding these wage distributions, HR can develop more informed employee engagement strategies, career development programs, and workplace benefits to enhance job satisfaction and retention. Additionally, this report serves as a foundation for assessing salary competitiveness against external labor markets, aiming to be the preferred employer in the industry. We recognize this as an opportunity to implement wage enhancements, upskilling programs, and mentorship initiatives to accelerate career growth and earning potential. By ensuring competitive salaries and structured career development, we aim to reduce inequalities (SDG 10) while driving productivity and job satisfaction (SDG 8).

## UNDERSTANDING OUR ATTRITION RATE

Attrition rate, or the rate at which employees leave a company, is a critical indicator of workforce stability. Our 2024 attrition rate is 16.43% while industry benchmarks suggest that turnover rate in manufacturing ranges from 15-25% based with the latest PSA - 2020 Labor Turnover Statistics. This means that our attrition rate is within the expected range, demonstrating that we are retaining employees at a competitive level.

However, we recognize that every employee departure represents a potential loss of experience, knowledge, and relationships. To address this, we are strengthening our employee engagement strategies, career development programs, and workplace benefits to create an environment where people feel valued and motivated to stay.

## EMPLOYEE BENEFITS: TAKING CARE OF OUR PEOPLE

We recognize that employee well-being extends beyond paychecks. We provide a comprehensive range of mandatory and voluntary benefits designed to support financial security, health, and work-life balance.



BENEFIT	PROVIDED	% FEMALE EMPLOYEES AVAILING	% MALE EMPLOYEES AVAILING
Social Security (SSS)	✓	33.65%	66.35%
Health Insurance (PhilHealth)	✓	33.65%	66.35%
Housing Funds (Pag-IBIG)	✓	33.65%	66.35%
Parental Leaves	✓	N/A	1.66%
Vacation Leaves	✓	29.87%	70.13%
Sick Leaves	✓	33.71%	66.29%
Medical Benefits (Beyond PhilHealth)	✓	33.71%	66.29%
Retirement Fund (Beyond SSS)	✓	N/A	N/A

We believe that a well-supported employee is a productive and engaged employee. Our benefits are designed to align with industry standards and government regulations to ensure that our workforce remains healthy, financially secure, and motivated to contribute to the company's growth.



# BUILDING A SKILLED WORKFORCE THROUGH TRAINING & DEVELOPMENT

Continuous learning and development are critical to ensuring a future-ready workforce. Our investments in training and career development programs empower employees to take on new challenges and enhance their skills.



## OUR TRAINING PROGRAMS FOCUS ON:

- Technical Skills Development -- to enhance job-specific skills and knowledge, boosting self-confidence in performing daily tasks and improving overall job performance.
- Quality Awareness Training - to promote quality activities across all business stages, emphasizing the importance of quality in achieving business objectives and fostering a culture of continuous improvement.
- Workplace Safety Programs - to ensure a safe and compliant work environment, reducing workplace hazards and risks, and promoting employee well-being and safety awareness.

By investing in training, we are enhancing both individual and company-wide performance, contributing to SDG 4 (Quality Education) and SDG 8 (Decent Work and Economic Growth).

# STRENGTHENING LABOR-MANAGEMENT RELATIONS

A transparent and collaborative relationship between employees and management fosters workplace stability, productivity, and engagement.

- 47.18% of employees are covered under a Collective Bargaining Agreement (CBA), ensuring worker representation in decision-making processes and policy negotiations.
- 15 employee consultations were conducted in 2024, focusing on employment policies, wage discussions, and working conditions.

# COLLECTIVE BARGAINING AGREEMENT BENEFITS

To minimize disputes and strengthen trust, inclusivity, and shared decision-making, aligning with SDG 8's focus on protecting labor rights. Here's a breakdown of the comprehensive benefits package for employees covered by the Collective Bargaining Agreement (CBA).

MONETARY BENEFITS			
BENEFIT	PROVIDED	% FEMALE EMPLOYEES AVAILING	% MALE EMPLOYEES AVAILING
Annual Wage Increase daily wage increase to keep pace with inflation and cost of living.	✓	100%	100%
Christmas Gift a yearly gift to union members during the holiday season.	✓	100%	100%
Perfect Attendance Incentive reward for union members with perfect attendance.	✓	23%	57%
Mid-Year Bonus incentive for hitting the sales target to support union members' financial needs.	✓	All union and non-union members are qualified, but failed to hit Sales target in 2024.	All union and non-union members are qualified, but failed to hit Sales target in 2024.
Loyalty Cash Incentive incentive for hitting the sales target to support union members' financial needs.	✓	3%	8%

LEAVE BENEFITS			
BENEFIT	PROVIDED	% FEMALE EMPLOYEES AVAILING	% MALE EMPLOYEES AVAILING
Birthday Leave leave provision for birthday celebration.	✓	14%	25%
Emergency Leave leave provision for unexpected personal or family emergencies.	✓	13.51%	37.16%
Bereavement Leave compassionate leave for union members dealing with the loss of a loved one.	✓	0.00%	1.35%
Union Leave of paid leave for union activities, applicable to the entire union, not individual members.	✓	0.00%	5%



ADDITIONAL BENEFITS			
BENEFIT	PROVIDED	% FEMALE EMPLOYEES AVAILING	% MALE EMPLOYEES AVAILING
<b>Rice Subsidy</b> half a cavan of rice provided twice a year to support union members' basic needs.	✓	100%	100%
<b>Educational Fund</b> financial support for union members' educational pursuits.	✓	Fund available, but no current union program	Fund available, but no current union program
<b>Health Fund</b> access to medical resources and financial assistance for health-related expenses.	✓	Fund available, but no current union program	Fund available, but no current union program
<b>Reproductive Health</b> support for union members' reproductive health needs.	✓	Fund available, but no current union program	Fund available, but no current union program
<b>Social Amelioration Fund</b> assistance for union members facing social and economic challenges.	✓	Fund available, but no current union program	Fund available, but no current union program
<b>Industrial Peace and Productivity Program</b> initiatives promoting harmony and productivity in the workplace.	✓	Fund available, but no current union program	Fund available, but no current union program
<b>Ecology Program</b> environmental conservation efforts and initiatives.	✓	Fund available, but no current union program	Fund available, but no current union program

Union members receive various monetary benefits, including an annual wage increase to keep up with inflation and a Christmas gift as a token of appreciation. To encourage daily attendance, employees with perfect attendance can earn the monthly Perfect Attendance Incentive which has been availed by 23% of female employees and 57% of male employees. This program enhances workplace efficiency while fostering a culture of discipline and commitment.

While the Loyalty Cash Incentive recognizes long-term commitment and is awarded during the company’s annual anniversary celebration. In the most recent awarding, 3% of female employees and 8% of male employees received a certificate of appreciation along with their loyalty cash incentive, reinforcing their dedication and encouraging retention. The awardees stay for more than 5 years, 10 years, 15 years, 20 years, and 25 years in the company. A Mid-Year Bonus is available but was not availed in 2024 due to unmet sales targets.

Employees have access to various leave benefits to support their well-being. Emergency Leave is available for urgent matters, while Bereavement Leave provides support during personal loss. The company also grants Union Leave, offering 25 paid days for union activities, such as the recent educational seminar, and the Conduct of 16th National Congress and Seminar-Workshop of the Department of Education – National Employees’ Union attended by 12 male employees, representing 5% of the workforce. Additionally, rank-and-file employees enjoy a special birthday leave, promoting work-life balance, with 14% of female and 25% of male employees availing of this benefit.

Additional benefits focus on employee well-being and sustainability. All union members receive a Rice Subsidy twice a year, ensuring basic needs are met. The company also offers an Educational Fund, Health Fund, Reproductive Health Support, and a Social Amelioration Fund, though these have not been accessed recently. Programs promoting workplace harmony, such as the Industrial Peace and Productivity Program, and sustainability efforts through the Ecology Program, are in place but remain underutilized.

## OTHER EMPLOYEE BENEFITS

CROWN provides a range of benefits to support employee well-being, financial security, and work-life balance.

Managers and supervisors are encouraged to set an example by maintaining excellent attendance and qualifying for the quarterly perfect attendance incentive. Currently, **10% of male managers** and **5% of female managers**, as well as **3% of male supervisors** and **5% of female supervisors**, achieve perfect monthly attendance.

Employees receive fully company-paid health care coverage under Health Maintenance Incorporated (HMI), which includes annual physical exams, laboratory tests, and medical services such as optical, dental, outpatient, and inpatient surgical procedures. The HR Department has a dedicated nurse and staff to assist employees with medical documentation and procedures. Additionally, the company provides essential medicines for common ailments such as headaches, body pain, and stomach discomfort, ensuring employees' immediate health needs are addressed.

To ensure financial security beyond employment, the company fully funds a Retirement Fund, with no deductions from employee salaries. Employees are also provided with free accident and life insurance, as well as bereavement and calamity leave benefits. While work-life balance is promoted through vacation and sick leaves (VL/SL), which are convertible to cash if unused.

These benefits demonstrate our commitment to employee welfare by fostering a workplace that is fair, supportive, and sustainable. By investing in financial incentives, leave privileges, and additional assistance programs, we empower our workforce, promote overall well-being, and contribute to a more resilient and engaged organization.



## UPHOLDING WORKPLACE HEALTH AND SAFETY

The well-being of our workforce is fundamental to our success, and we remain committed to ensuring a safe and healthy work environment. In 2024, we recorded 629,398.67 safe man-hours, achieving a 99.96% incident-free rate, demonstrating a strong safety culture within the company. Despite this, 257.17 hours, or .04% of total man-hours, were recorded as lost due to 14 work-related injuries and 12 cases of work-related ill health—primarily caused by chemical exposure. While the total number of affected employees remains low at 26, these incidents highlight the need for continuous improvements in workplace safety, hazard control, and health monitoring.

To reinforce our commitment to safety, we conducted two emergency preparedness drills, equipping employees with essential crisis response skills. Moving forward, we aim to enhance safety training programs, strengthen the provision of personal protective equipment (PPE), and implement stricter hazard controls. By prioritizing occupational health and risk prevention, we align with SDG 3 (Good Health and Well-being) and continue to foster a proactive, zero-harm work culture.





## SAFETY TRAINING

Fire safety is a critical component of our commitment to workplace safety and employee well-being. Conducting fire safety drills twice a year ensures that our employees are well-prepared to respond effectively in case of an emergency. These drills help familiarize employees with evacuation routes, proper use of fire extinguishers, and emergency protocols, minimizing risks and potential injuries. By reinforcing fire safety awareness and readiness, we create a safer work environment, align with occupational safety standards, and uphold our responsibility to protect our workforce.



## LABOR RIGHTS: COMMITMENT TO ETHICAL AND INCLUSIVE WORKPLACES

Our company upholds strict compliance with labor laws and human rights, ensuring a workplace that is free from forced labor, child labor, and any form of discrimination. We have established clear policies, including our Policy on Child and Forced Labor and our Policy on Non-Discrimination and Equal Employment, which explicitly prohibit workplace harassment, bullying, and unfair treatment. We are committed to fostering an ethical, inclusive, and respectful working environment where employees are protected, empowered, and treated with dignity. To date, we have had no legal actions or employee grievances related to forced or child labor, reflecting our dedication to upholding labor rights and ethical business practices.



## RELATIONSHIPS WITH THE COMMUNITY







# CROWN<sup>®</sup>

## RESPONSIBLE SUPPLY CHAIN MANAGEMENT



### DRIVING SUSTAINABILITY ACROSS THE VALUE CHAIN

Supply chains are the backbone of any business, directly influencing efficiency, profitability, and corporate responsibility. As organizations strive to meet global sustainability goals, responsible supply chain management has become a crucial driver in reducing environmental impact, upholding ethical labor practices, and ensuring long-term business resilience. At CROWN Asia Chemicals Corporation, we understand that a sustainable supply chain is not just an operational necessity but a core component of our commitment to a better future.

### ALIGNING WITH THE UN SUSTAINABLE DEVELOPMENT GOALS (SDGs)

CROWN Asia Chemicals Corporation aligns its supply chain sustainability efforts with the United Nations Sustainable Development Goals (UN SDGs), ensuring that our business operations contribute to broader global objectives. We prioritize ethical sourcing and safe working conditions to uphold fair labor practices, ensuring that all workers within our supply chain are treated with dignity and respect. We also foster innovation and sustainable production techniques, promoting eco-friendly materials and waste reduction strategies that minimize our environmental footprint. Furthermore, by strengthening supplier partnerships, we mitigate climate risks and enhance the resilience of our supply chain against disruptions, securing long-term sustainability for our stakeholders.



### STRENGTHENING SUPPLIER RELATIONSHIPS FOR A RESILIENT SUPPLY CHAIN

A strong and reliable supply chain begins with cultivating long-term, trust-based relationships with our suppliers. Currently, 55% of our suppliers have been with us for almost 20 years, while 34% have remained for nearly a decade. The remaining 11% are newer partners, having been with us for less than five years, as we continuously seek potential suppliers who can provide high-quality raw materials, products, and services.

By fostering collaboration and transparency, we enhance operational efficiency, reduce potential risks, and improve decision-making processes. These partnerships enable us to maintain quality, reliability, and sustainability at every stage of the supply chain. Our proactive approach not only supports business continuity but also reinforces our commitment to responsible sourcing, ensuring that our suppliers adhere to the same high standards that define our company's values.



### UPHOLDING ETHICAL AND FAIR BUSINESS PRACTICES

Integrity is at the heart of our business operations. We adhere to strict ethical standards, ensuring transparency, fairness, and compliance with both international and local regulations. Our supply chain policies are aligned with ISO 9001:2015 and the Bureau of Product Standards, reinforcing our dedication to quality and excellence. We also enforce stringent policies on anti-corruption, bribery prevention, and data privacy, ensuring that our business dealings are conducted with the highest levels of integrity and accountability.

### ENSURING LABOR RIGHTS AND EMPLOYEE WELFARE

People are the backbone of every supply chain, and we are steadfast in our commitment to protecting labor rights and employee welfare. We ensure that our suppliers comply with fair labor laws, prohibiting any form of forced or child labor while upholding workers' rights to fair wages, safe working conditions, and comprehensive benefits. Additionally, we encourage diversity, inclusion, and gender equality in supplier hiring and management, promoting a more inclusive and equitable work environment across all levels of our supply chain.





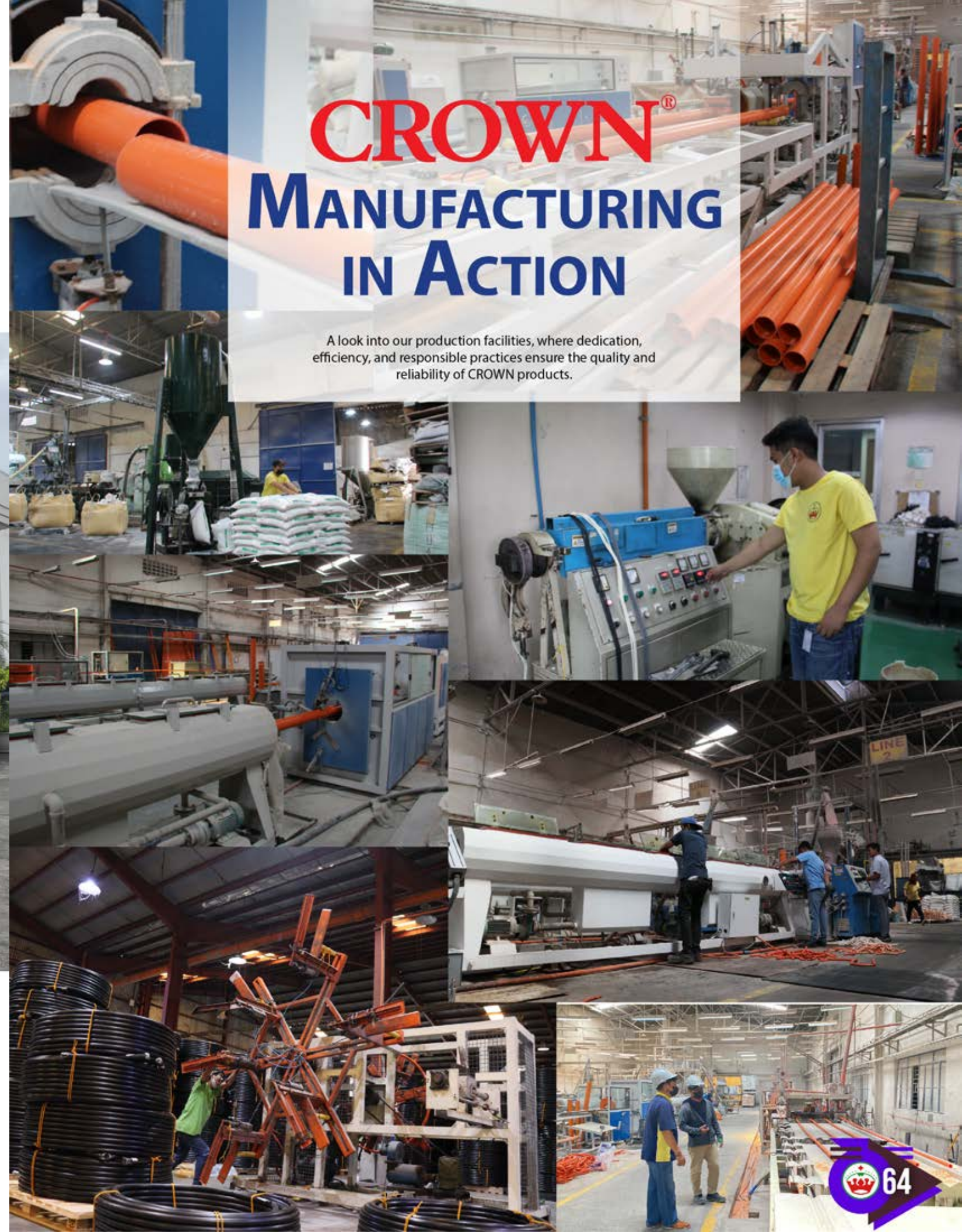
## MANAGING RISKS FOR A MORE SECURE SUPPLY CHAIN

In a rapidly changing global landscape, supply chain disruptions pose significant challenges. To mitigate risks, we conduct regular supplier evaluations and audits, assessing compliance, performance, and sustainability initiatives. Our proactive risk management strategies include developing contingency plans to address potential threats such as natural disasters, pandemics, geopolitical uncertainties, and economic fluctuations. By preparing for these challenges in advance, we ensure that our supply chain remains resilient, adaptable, and capable of withstanding external pressures.



## COMMITMENT TO CONTINUOUS IMPROVEMENT

Sustainability is a journey, not a destination. At CROWN Asia Chemicals Corporation, we continuously refine our supply chain sustainability practices, integrating emerging innovations and best practices to drive meaningful progress. By prioritizing transparency, resilience, and responsible business conduct, we create long-term value for our stakeholders while contributing to a more sustainable and ethical future. Our commitment to responsible supply chain management is not just about compliance—it is about shaping an industry that balances profitability with purpose, ensuring that we leave a positive impact on both people and the planet.



# CROWN® MANUFACTURING IN ACTION

A look into our production facilities, where dedication, efficiency, and responsible practices ensure the quality and reliability of CROWN products.





# SUSTAINABLE OPERATIONS

## PRODUCTION, WAREHOUSE, AND LOGISTICS MANAGEMENT

At CROWN Asia Chemicals Corporation, sustainability is embedded in every aspect of our operations—from production to warehouse and logistics management. We recognize that responsible industrial practices are critical in reducing environmental impact, enhancing efficiency, and fostering long-term business resilience. Our commitment aligns with the United Nations Sustainable Development Goals (UN SDGs), particularly strengthening sustainable industrialization through innovative production and logistics solutions; reducing material waste, optimizing resource use, and implementing sustainable supply chain strategies; and minimizing our carbon footprint through energy-efficient operations and sustainable logistics.

# PRODUCTION MANAGEMENT

## SUSTAINABLE AND WORLD-CLASS MANUFACTURING

CROWN is a trusted supplier of high-quality and sustainable products, including CROWN Pipes and fittings, PVC Thermal Roofing, and premium PVC compounds, which support critical public and private infrastructure projects across the country. Our export-grade PVC compounds contribute to global industries, including wires and cables, IC tubing, and electrically injected molded products, reinforcing our role in the circular economy.

At CROWN Asia Chemicals Corporation, sustainability is not just a commitment—it is embedded in every stage of our production process. Our Production Team ensures that our manufacturing operations uphold the highest standards of efficiency, quality, and environmental responsibility, reinforcing our role as a leader in sustainable industrial practices.

We take a proactive approach to minimizing environmental impact by integrating energy-efficient technologies, optimizing resource use, and embracing circular economy principles. Our key sustainability initiatives include:

### WASTE REDUCTION AND RECYCLING

We prioritize waste minimization at every stage of production, ensuring that raw materials are used efficiently to reduce excess waste and lower environmental footprint. Through strategic recycling initiatives, we recover and repurpose production by-products, transforming what would have been discarded materials into valuable resources. This approach:

- Optimizes material utilization, reducing unnecessary raw material consumption.
- Minimizes landfill waste, promoting a cleaner and more sustainable production cycle.
- Enhances operational efficiency, lowering costs while reducing environmental impact.



## COMPLIANCE WITH GLOBAL AND LOCAL STANDARDS

CROWN maintains strict adherence to internationally recognized standards, ensuring that our manufacturing processes meet the highest benchmarks for quality, efficiency, and sustainability. Our commitment to:

- ISO 9001:2015 ensures that we follow a structured quality management system, continuously improving production efficiency while minimizing environmental impact.
- National Product Quality Standards guarantees that our products meet safety and performance regulations, reinforcing our role as a trusted industry leader.
- By upholding these global and local standards, we ensure that our production methods align with best practices in sustainable and responsible manufacturing.

## CIRCULAR ECONOMY IN ACTION

At CROWN, we go beyond traditional recycling by actively repurposing production fall-offs into new, high-quality products. Through innovation and resource efficiency, we give materials a second life, contributing to a more sustainable supply chain. This commitment has led to the development of:

- CROWN Enduro Sanitary Pipes and Fittings – Engineered from repurposed materials, these durable and reliable products support sustainable drainage and wastewater management solutions.
- CROWN Electrical Wire and Cable Protector – Crafted from recycled materials, this protective conduit ensures safety, durability, and environmental responsibility in electrical installations.

## WATER CONSUMPTION AND MANAGEMENT

Efficient water management reduces costs, conserves resources, and minimizes environmental impact. As part of our commitment to sustainable water use, CROWN has implemented a rainwater collection system to support machine cooling processes, reducing reliance on chemically treated water. Our cooling rain harvester tanks, along with a stern tank system and cooling water pits, optimize water storage and utilization across our production facilities. These innovations ensure continuous operations while minimizing wastewater discharge and reducing dependence on municipal water supplies.

As we continue to expand our production capabilities, we remain steadfast in our mission to develop sustainable solutions that not only meet industry demands but also contribute to a cleaner, more responsible future for all.

By closing the loop in material usage, we actively contribute to advancing sustainable industrial practices and innovations and reducing waste, optimizing resource efficiency, and promoting circular economy principles. Through these initiatives, CROWN strengthens its commitment to responsible manufacturing, ensuring that sustainability remains at the core of our operations while delivering world-class products to our customers.



# WAREHOUSE MANAGEMENT

## OPTIMIZING RESOURCE EFFICIENCY

At CROWN Asia Chemicals Corporation, efficient warehouse management plays a crucial role in our commitment to sustainability. By optimizing the way we store, track, and manage materials, we minimize waste, enhance resource efficiency, and ensure a seamless supply chain—all while reducing our environmental impact.

## ADVANCED WAREHOUSE MANAGEMENT

To enhance operational efficiency, we have implemented a Warehouse Location Monitoring System, a smart inventory management solution for our produced products that allows us to:

### ENABLE END-TO-END INVENTORY TRACKING

Our system provides real-time visibility into stock levels, minimizing human errors and improving inventory accuracy. By tracking products from storage to dispatch, we reduce the risk of misplacement and ensure timely replenishment.

### REDUCE INVENTORY LOSSES AND MATERIAL WASTE

Proper stocking and documentation prevent products deterioration, overstocking, and losses, leading to a more sustainable and cost-effective operation. By minimizing excess inventory, we reduce waste and avoid unnecessary raw material consumption.

### OPTIMIZE RESOURCE UTILIZATION

– A well-organized warehouse minimizes unnecessary storage costs and reduces energy consumption, supporting environmentally responsible operations. Efficient space utilization leads to improved workflow, faster processing, and fewer disruptions in the supply chain.

At CROWN, we manage over 1,000 inventory codes (SKUs) across our range of pipes and fittings, roofing materials, septic tanks, and other construction-related products. Additionally, we can produce up to a 100 (hundred) grades of our PVC compounds.

With such a vast inventory, effective warehouse management is essential. By adopting advanced warehouse practices, we enhance efficiency through technology, reduce product wastage, and promote responsible resource use, contributing to a more sustainable and streamlined operation.







## PREVENTING WASTE AND ENSURING LONGEVITY

Effective monitoring and stocking of raw materials are critical to maintaining product quality and preventing unnecessary losses. At CROWN, we emphasize:

### PROACTIVE INVENTORY MONITORING

Regular inspections ensure that materials are stored under optimal conditions, preventing deterioration and reducing waste.

### STRATEGIC STOCKING PRACTICES

Proper categorization and organization of materials ensure that supplies are easily accessible and rotated efficiently, preventing stock obsolescence and ensuring quality preservation.

### SUSTAINABLE STORAGE SOLUTIONS

By implementing structured storage systems, we reduce clutter, improve efficiency, and enhance workplace safety, all while minimizing resource wastage.

By optimizing warehouse operations and adopting sustainable storage practices, we ensure that our supply chain remains resilient, cost-efficient, and environmentally responsible. These initiatives strengthen operational excellence while advancing our commitment to sustainability, reinforcing CROWN's position as a leader in responsible industrial practices.



# LOGISTICS MANAGEMENT

## DRIVING SUSTAINABILITY IN DISTRIBUTION

In today's world, logistics management is a cornerstone of building sustainable supply chains, ensuring that products are delivered in the most efficient way possible while minimizing their environmental footprint. At CROWN, we recognize the pivotal role logistics plays in achieving sustainability goals. In 2023-2024, we took a bold step forward by upgrading our logistics equipment, reinforcing our dedication to both operational excellence and environmental stewardship.

### INVESTMENT IN MODERN DELIVERY TRUCKS

By investing in new, fuel-efficient delivery trucks, we've significantly reduced carbon emissions while improving our delivery efficiency.

### OPTIMIZED ROUTING AND FLEET MANAGEMENT

Through advanced fleet management techniques and strategic route planning, we decrease energy consumption, ensuring each trip is as resource-efficient as possible.

### ECO-CONSCIOUS STRATEGIES

Our focus on responsible logistics operations spans from choosing eco-friendly materials and regular delivery truck maintenance to refining every step of the supply chain to minimize waste and emissions.

At CROWN, our Pipes and Roofing Logistics Team plays a crucial role in reducing environmental impact by optimizing delivery schedules. By prioritizing full-load trips—especially to more distant locations—we minimize fuel consumption, streamline manpower use, and ensure that resources are utilized to their maximum potential. This approach not only guarantees on-time deliveries but also upholds our commitment to resource sustainability.

Meanwhile, our Compounds Logistics Team applies the same delivery strategy and goes above and beyond in sustainability by collecting used sacks from our Compounds clients and reusing them for subsequent deliveries. Rather than allowing these packaging materials to contribute to waste, we extend their lifecycle, reducing landfill impact and promoting a circular economy. By reusing materials, we actively support sustainable resource use throughout our operations.

These initiatives are part of our broader commitment to driving sustainability not just in product manufacturing, but throughout our entire supply chain. We are proud to be a part of a future where efficiency and environmental responsibility go hand in hand.

## COMMITMENT TO A GREENER FUTURE

At CROWN, we continuously innovate and refine our production, warehouse, and logistics operations to meet the evolving demands of sustainability. By integrating responsible consumption, energy-efficient technologies, and ethical supply chain management, we not only enhance business performance but also contribute to a more sustainable and environmentally responsible future.







# DRIVING SUSTAINABLE CUSTOMER RELATIONSHIPS

At CROWN Asia Chemicals Corporation, sustainability is not just about environmental stewardship—it also encompasses how we engage, support, and build long-term relationships with our customers. A truly sustainable business thrives on trust, responsiveness, and the ability to deliver value-driven solutions.

Our approach to customer management aligns with the United Nations Sustainable Development Goals (UN SDGs) by prioritizing innovation, safety, efficiency, quality, and social responsibility, all rooted in our ethical business practices. We ensure that our products and services exceed industry standards through continuous innovation and technical excellence, enhancing their quality and longevity to promote sustainable consumption and reduce waste. By upholding transparency, accountability, and ethical business practices, we build lasting trust with our customers, fostering strong relationships that contribute to a more responsible and sustainable industry.

## CUSTOMER INSIGHTS

Understanding the evolving needs of our customers is essential for delivering superior products and services. In 2024, we conducted comprehensive customer satisfaction surveys across both B2B and B2C segments, gathering valuable insights to refine our product offerings based on real-time feedback, enhance service quality and responsiveness, and drive continuous innovation aligned with industry demands and sustainability priorities. By integrating customer insights into our strategic decision-making, we enhance long-term value creation while supporting sustainable business growth.

As a result of our customer-first approach, we are proud to report a 98.36% average customer satisfaction score in 2024—a testament to our commitment to excellence.



## CROWN PROCESS FOR HANDLING CUSTOMER CONCERNS

CROWN prioritizes efficient and effective resolution of customer concerns. The sales administration teams for the four divisions—Compounds, Pipes, PPR/HDPE, and Roofing—are responsible for addressing customer issues promptly. Upon receiving a complaint, the sales admin team acknowledges and records it in the Customer Complaint Report. If the issue can be resolved immediately at the point of contact, a solution is provided to the client. Otherwise, the concern is escalated to the sales technical and operations team for further assessment and resolution.

Once the root cause of the issue is identified, the team determines the appropriate resolution, which may involve refunds, corrections, or detailed explanations. If the concern is deemed valid based on the technical report, a replacement will be provided. Regardless of whether the complaint is found valid or invalid, the sales admin team will issue a formal business letter explaining the decision.

Clear communication and transparency are maintained throughout the process to ensure customers feel heard and satisfied with the resolution.





# CUSTOMER LOYALTY

At CROWN, our commitment to quality, innovation, and strong client relationships has resulted in a solid base of almost 2,000 loyal customers across our product lines—CROWN Compounds, CROWN Pipes, CROWN PPR/HDPE and CROWN PVC Thermal Roofing.

**CROWN Compounds:** A remarkable 80% of our clients have been with us since our inception, demonstrating the trust and reliability we have built over the years. The remaining 20% are new clients seeking customized grades for new product concepts as we continue to expand our market reach.

**CROWN Pipes & CROWN PPR/HDPE:** We partner with dealers, contractors, and top developers to build a stronger, more sustainable future. Our high-quality, durable, and innovative piping solutions support critical infrastructure projects that drive economic growth and improve everyday lives.

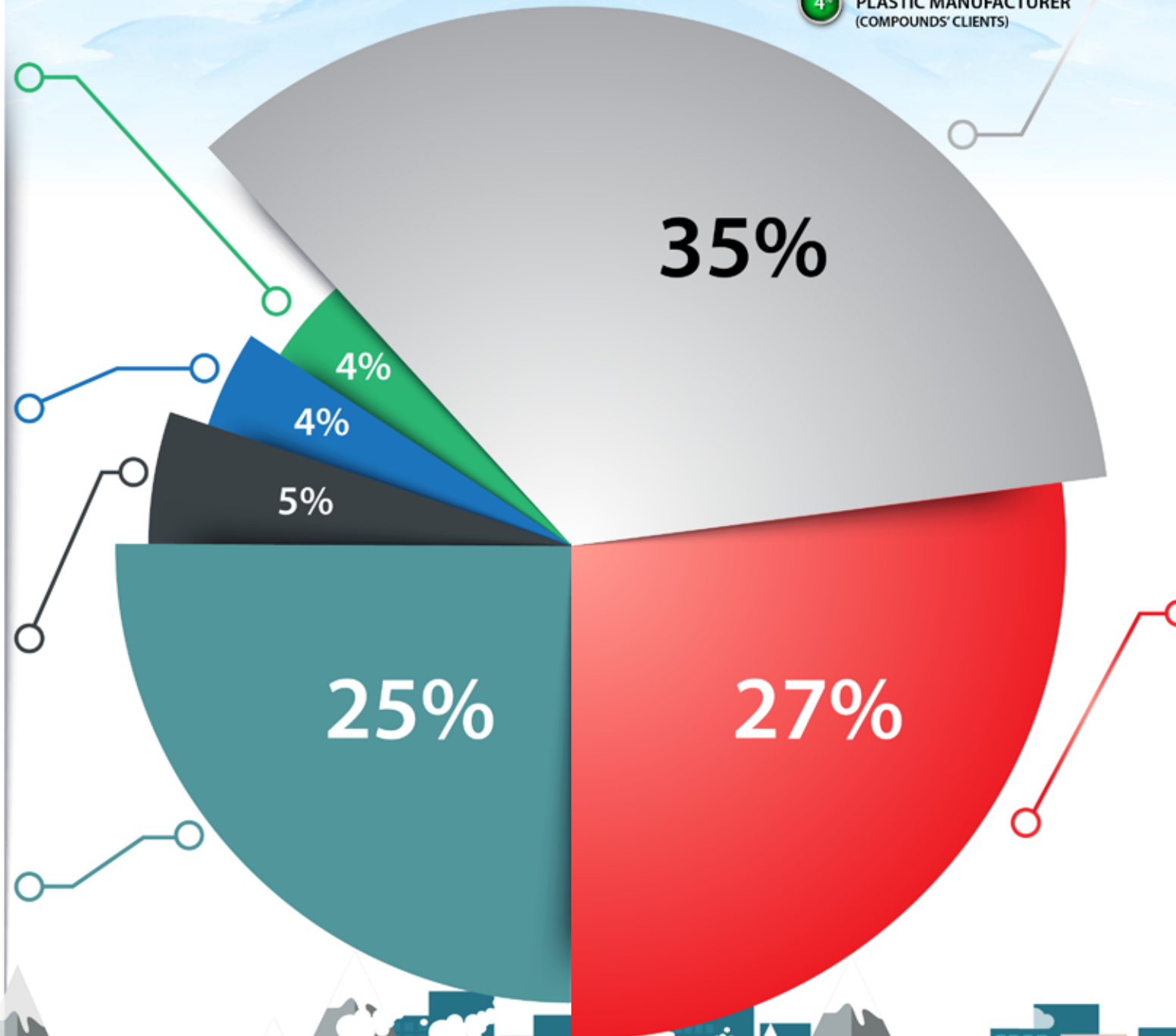
CROWN Pipes are available in leading modern trade depots in 82 locations nationwide, ensuring accessibility and convenience for customers:

- 37 AllHome branches
- 36 Wilcon Depot branches
- 9 Our Builders Warehouse branches

This strong market presence and customer retention are a testament to our dedication to delivering superior products and fostering long-term partnerships.

**Top Developers:** As trusted partners of the Philippines' 100 leading developers like—SMDC, Ayala Land, DMCI, Megaworld, Robinsons Land, Sta. Lucia, Shang Properties, San Miguel, Citiland, Grand Taipan Land, Primetowers, Ortigas & Company, Urban Deca, 8990 Developers, Cathay Land, Sun Wealth Land and Raemuland—we contribute to transformative projects that shape communities. From high-rises and commercial hubs to large-scale infrastructure, our commitment to innovation and sustainability supports the development of modern, future-ready spaces.

**CROWN PVC Thermal Roofing. Customers:** With a growing customer base of more than 500 clients, CROWN continues to meet the evolving demands of the roofing industry by providing durable, energy-efficient, and sustainable solutions. Our strong partnerships with dealers ensure that CROWN PVC Thermal Roofing products are readily available across key locations nationwide, making high-quality roofing solutions accessible to contractors, developers, and homeowners.



**Dealers:** Our extensive network of over 800 dealers ensure CROWN Pipes products are accessible nationwide. With 70% of the dealers working with us since 2002, we continue to support both established and new businesses, helping them grow and thrive. This widespread distribution allows us to serve projects of all scales, from homes to large infrastructure developments. CROWN Pipes' strong distribution network ensures nationwide accessibility through our selected dealers. In the Ilocos & Cordillera Region, we are partnered with T. Gamayo (Ilocos Norte), Acosta Electrical Supply (Baguio City), New Bangued SGL Trading Corp (Abra), LC Construction Supply (Bataan), Home Ideas (Pangasinan), and M. Abarra Trading (Pangasinan). In Central Luzon, key partners include 4Js Hardware and New Frenzel Enterprises (Zambales), TP Vergara Construction Supply (Nueva Ecija), Ever Glory Union Phils. Co. Inc. and JLO Hardware (Bulacan), DEB Trading and Landmark Trading (Pampanga), CPM Hardware, and Gerome Garcia Hardware (Tarlac). For Cagayan Valley, we work with Cordon Primes (Isabela), Quirino Primes (Quirino), Buildex + Complete Hardware, Marton Hardware (Isabela), Malabong Construction Supply, Kalinga Lumber (Kalinga), EG Chua Hardware (Cagayan), and Weldshoppe Enterprise (Nueva Vizcaya). Our Bicol Region presence includes AV Laynes Trading & Construction (Catanduanes), King James Ent. (Albay), Cityhome Ent. (Sorsogon), and 101 Shopping Center (Camarines Sur). In Visayas, we have strong partnerships with Dulos Hardware (Iloilo City), Arpc Hardware (Bacolod, Negros Occidental), Prime Home Hardware (Dumaguete), Jetz Construction Supply (Cebu), Cebu Home Builders (Mandaue City), and Sara Commercial (Southern Leyte). And Mindanao, our reach extends to New Orienstar Marketing, Everflex Electrical, and Diamond Industrial Sales (Davao). Through these trusted partners, CROWN Pipes continues to provide quality products and sustainable solutions for homes and large-scale projects nationwide.

**Contractors:** We collaborate with more than 500 leading contractors, including the country's top 10: JCO Construction, Makati Development Corporation, Megawide, DMCI, Ayala Land, EEI, First Balfour, Sta. Clara International, DDT, and DMWAI. Whether for residential, commercial, or industrial projects, our high-performance piping solutions meet the highest quality and safety standards, ensuring long-term durability and efficiency.

By working closely with experienced contractors, we deliver products that meet stringent building requirements while ensuring easy installation, long-term durability, and cost efficiency for homes and offices providing safety and quality to families and end users. Through these collaborations, we set industry benchmarks in roofing innovation, plumbing system, enhancing structural integrity, energy efficiency, and sustainability in every project.







## CROWN PIPES' PRESENCE

CROWN Pipes are available in 82 modern trade depot locations nationwide and through our extensive network of over 800 dealers, reaching even the farthest islands in the country.

This strong market presence and customer loyalty reflect our commitment to delivering superior products and building lasting partnerships. Wherever our customers are, CROWN Pipes is readily available to provide sustainable solutions when they need them.



# CROWN® CORPORATE GOVERNANCE



## EXCELLENCE IN GOVERNANCE AND SUSTAINABILITY

CROWN upholds good corporate governance through accountability, transparency, and ethical business practices, ensuring long-term financial viability and sustainable growth. By continuously refining its internal structures and policies, the company fosters a culture of integrity and efficiency that aligns with the interests of stakeholders, including shareholders, employees, customers, and the communities it serves. Governance frameworks are reinforced through structured policies and regular board and management meetings, which allow for the evaluation of risks, process improvements, and operational enhancements. These efforts ensure that CROWN remains resilient and adaptable in a rapidly evolving business landscape while upholding the highest standards of corporate responsibility.

Ethical business practices are central to CROWN's operations, promoting honesty, integrity, and professionalism across all levels of the organization. The company enforces a strict no-gift and no-bribery policy to uphold fairness and prevent conflicts of interest. Additionally, CROWN prioritizes employee welfare by implementing strong policies against workplace harassment and maintaining a drug-free environment through mandatory annual surprise drug tests. These initiatives create a safe and respectful workplace where employees can thrive and contribute effectively to the company's mission. Ethical leadership is not just a guideline but a core value that drives responsible decision-making across all business functions.

Beyond governance and ethics, CROWN integrates sustainability into its risk management strategy to ensure long-term business continuity and environmental stewardship. The company proactively addresses resource efficiency by shifting to renewable energy sources, improving production and distribution efficiency, and implementing prudent cost-cutting measures. By forecasting risks such as fluctuating fuel prices, foreign exchange volatility, and rising operational costs, CROWN strengthens its resilience against external challenges while maintaining its commitment to sustainability. Succession planning also plays a crucial role in securing the company's future, ensuring that key leadership positions are filled with capable individuals who can drive continued growth and innovation. As a publicly listed company, CROWN remains fully committed to regulatory compliance, ensuring timely disclosures through the PSE Edge portal and maintaining transparency in all its corporate dealings. Through these efforts, CROWN continues to sustain excellence and drive meaningful contributions toward sustainable development.







## PROTECTION & SECURITY INFRASTRUCTURE MANAGEMENT

In today's digital landscape, data privacy is a fundamental aspect of good governance. CROWN upholds the highest standards of data protection by implementing comprehensive security measures to safeguard sensitive information. Our commitment aligns with global best practices and regulatory requirements, ensuring that all stakeholders—employees, customers, and partners—can trust our systems. By continuously enhancing our cybersecurity framework, we mitigate risks, prevent unauthorized access, and maintain data integrity.

CROWN's data privacy policies comply with the Data Privacy Act, emphasizing transparency, accountability, and responsible data handling. We invest in advanced security infrastructure, conduct regular audits, and provide training to employees to strengthen cybersecurity awareness. These measures not only protect the company's critical information but also contribute to sustainable business operations by fostering trust and compliance.

Through responsible data management, CROWN reinforces its dedication to ethical business practices and good governance.



## COMMITMENT TO EXCELLENCE

### RECOGNITIONS FOR GOOD GOVERNANCE

At CROWN Asia Chemicals Corporation, we believe that good governance is the foundation of sustainable business growth. Our commitment to transparency, accountability, and ethical leadership has earned us numerous accolades, reinforcing our role as a responsible corporate citizen. These recognitions affirm our dedication to upholding the highest standards in corporate governance, ensuring that we create long-term value for our stakeholders while contributing to national development.

### RECOGNIZED BY THE PHILIPPINE STATISTICS AUTHORITY (PSA)

CROWN Asia Chemicals Corporation was honored by the Philippine Statistics Authority (PSA) during the PSA Respondent's Forum on September 24, 2024, at the PSA National Office. This recognition highlights our commitment to providing accurate and reliable data that supports informed policymaking and economic planning. By actively contributing to national statistical efforts, we demonstrate our dedication to transparency and corporate responsibility, ensuring that our business operations align with national development goals.



### BIR RECOGNITION FOR TAX COMPLIANCE AND COMMENDABLE GROWTH TRAJECTORY

Good governance extends beyond corporate policies—it includes fulfilling our fiscal responsibilities. CROWN Asia Chemicals Corporation has been recognized by the Bureau of Internal Revenue (BIR) for its timely and accurate tax payments. This acknowledgment not only underscores our commitment to corporate integrity but also highlights our commendable growth trajectory. By consistently meeting our tax obligations, we demonstrate our dedication to contributing to national progress and supporting the country's economic stability.

These recognitions serve as milestones in our journey toward continuous improvement and sustainability. We remain steadfast in our mission to uphold the highest governance standards, fostering trust, accountability, and long-term success for our company, employees, partners, and the communities we serve.





### GROWTH CHAMPION AWARD BY PHILIPPINE DAILY INQUIRER & STATISTA

CROWN Pipes has also been recognized as a Growth Champion by the Philippine Daily Inquirer and Statista, a testament to our strong and consistent business performance. This award acknowledges our ability to expand operations, drive innovation, and create sustainable growth opportunities while maintaining ethical and responsible business practices. By fostering resilience and adaptability, we continue to strengthen our market leadership and deliver value to our stakeholders.



### GOLDEN ARROW AWARD FOR OUTSTANDING CORPORATE GOVERNANCE

For the third consecutive year, CROWN received the prestigious Golden Arrow Award from the Institute of Corporate Directors (ICD) during the 2024 Golden Arrow Awards Ceremony on September 19, 2024. As the only publicly listed company in the pipes manufacturing industry in the Philippines to earn this distinction, we take pride in our unwavering commitment to integrity, governance excellence, and adherence to the ASEAN Corporate Governance Scorecard (ACGS). This achievement reflects our ongoing efforts to maintain transparency, ethical business practices, and sound decision-making at all levels of the organization.



# CROWN<sup>®</sup>

## ECONOMIC PERFORMANCE



## FINANCIAL RESILIENCE AND ECONOMIC CONTRIBUTION

### DIRECT ECONOMIC VALUE GENERATED AND DISTRIBUTED

Marking its 35th year in the manufacturing industry, CROWN ASIA CHEMICALS CORPORATION has remained steadfast in its commitment to excellence and growth. Established in 1989 as a compounding company, CROWN has expanded its operations to include the production of PVC Pipes, PPR, HDPE, and roofing materials. In 2015, the Company took a significant step by becoming a publicly listed company on the Philippine Stock Exchange, reporting revenues of Php1.07 billion in its listing year. Over the years, CROWN has demonstrated resilience and adaptability, even amid the challenges brought about by the COVID-19 pandemic.





For the fiscal year 2024, CROWN generated revenues amounting to Php1.49 billion, with a corresponding net profit after tax of Php192.34 million.

### DIRECT ECONOMIC VALUE GENERATED AND DISTRIBUTED

INDICATOR	AMOUNT (IN PHP MILLIONS)					
	FY 2024	FY 2023	FY 2022	FY 2021	FY 2020	FY 2019
Direct Economic Value Generated (Revenue)	1,491.56	1,506.70	1,760.82	1,740.85	1,117.69	1,433.40
Direct Economic Value Distributed						
Operation Cost	219.63	189.51	215.90	168.34	159.98	185.10
Employee Benefits and Wages	123.56	139.47	139.50	110.97	85.28	106.90
Payment to suppliers and other operating costs	993.27	1,053.84	1,228.84	1,350.00	647.34	960.00
Dividends given to stockholders	610.39	54.96	61.06	13.74	24.44	56.38
Interest payments to loan providers	0.01	0.11	0.67	0.47	1.32	2.41
Taxes give to government, which includes all taxes, incurred and/or paid to the government	76.60	96.94	97.22	88.02	70.29	73.01

While economic pressures, including inflation and rising interest rates, led to a 14% revenue decline in 2023, the Company remained agile in navigating market conditions. The economic downturn persisted into 2024, contributing to a further 1% decrease in revenues. Despite these challenges, CROWN remains optimistic that 2025 will bring renewed growth and opportunities.

### REVENUES PER DIVISION

DIVISION	AMOUNT (IN PHP MILLIONS)					
	FY 2024	FY 2023	FY 2022	FY 2021	FY 2020	FY 2019
Compounds	632.25	492.11	621.55	732.09	570.58	826.05
Pipes	656.80	798.12	915.34	891.95	432.02	480.31
PP-R/HDPE	188.60	202.84	191.15	155.94	102.68	110.34
Roofing	13.91	13.62	32.78	20.87	12.41	16.70
<b>Total</b>	<b>1,491.56</b>	<b>1,506.70</b>	<b>1,760.82</b>	<b>1,740.85</b>	<b>1,117.69</b>	<b>1,433.40</b>

### REVENUES PER MARKET

DIVISION	AMOUNT (IN PHP MILLIONS)					
	FY 2024	FY 2023	FY 2022	FY 2021	FY 2020	FY 2019
Local	1,102.59	1,247.40	1,453.60	1,248.39	750.72	951.56
Export	388.97	259.29	307.22	492.45	366.97	481.84
<b>Total</b>	<b>1,491.56</b>	<b>1,506.70</b>	<b>1,760.82</b>	<b>1,740.85</b>	<b>1,117.69</b>	<b>1,433.40</b>

## CROWN AS A CONSISTENT PARTNER FOR PROGRESS

CROWN continues to be a trusted name in the construction industry, serving both private and government projects. Through its extensive product offerings and commitment to quality, the Company plays a vital role in the nation's infrastructure development.

As a company rooted in the province of Bulacan, CROWN prioritizes hiring local talent, particularly from Guiguinto, strengthening its ties with the community. The Company also collaborates with the local government on corporate social responsibility (CSR) initiatives, though financial allocations for these projects remain modest at present.

Further, CROWN actively supports the local economy by sourcing raw materials from domestic suppliers whenever possible. In 2024, 61% of the Company's total purchases were made from local businesses, reinforcing its role in generating employment and contributing to economic development in the Philippines.

### PROPORTION OF SPENDING ON SUPPLIERS FOR RAW MATERIALS PURCHASED

YEAR	LOCAL		IMPORTED		TOTAL
	AMOUNT (IN PHP MILLIONS)	PROPORTION (%)	AMOUNT (IN PHP MILLIONS)	PROPORTION (%)	
2019	574.41	60.62%	373.19	39.38%	947.60
2020	495.28	76.51%	152.06	23.49%	647.34
2021	945.29	75.98%	298.90	24.02%	1,244.19
2022	674.06	69.84%	291.09	30.16%	965.15
2023	509.26	69.36%	224.94	30.64%	734.20
2024	467.04	61.39%	293.69	38.61%	760.73





# CROWN'S REVENUE DISTRIBUTION IN FY2024

HIGHLIGHTS ITS STRONG MARKET PRESENCE ACROSS KEY BUSINESS SEGMENTS

44.03%

CROWN PIPES remained the leading revenue contributor, accounting for 44.03% of total earnings. This underscores strong market demand and CROWN PIPES' reputation as a trusted supplier in the construction industry. Its growth is primarily driven by demand from leading developers, contractors, major depots, and dealers.

42.39%

CROWN COMPOUNDS followed closely at 42.39%, supported by both local and international markets for pellets used in the production of essential products such as wires and cables, IC tubings, window and door profiles, container packaging, sandals and footwear, and shrink-pack films.



44.03%

42.39%

12.64%

44.03%

CROWN PIPES DIVISION

42.39%

COMPOUNDS DIVISION

12.64%

PP-R & HDPE DIVISION

0.93%

CROWN THERMAL ROOFING DIVISION

12.64%

The CROWN PPR/HDPE segment accounted for 12.64%, reflecting steady demand for premium piping solutions, particularly in specialized applications where durability and efficiency are crucial.

0.93%

Meanwhile, the CROWN THERMAL ROOFING division, though comprising a smaller share at 0.93%, continues to serve a niche market, complementing CROWN's comprehensive product portfolio with advanced cool roofing solutions.

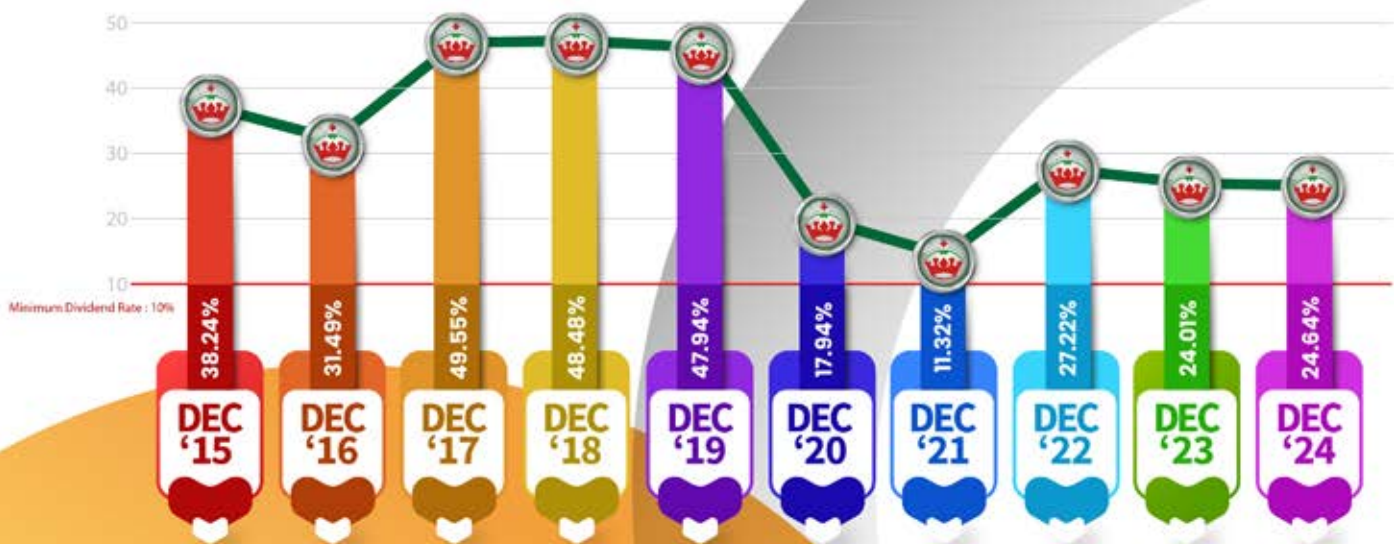
THESE FIGURES  
REINFORCE CROWN'S  
ADAPTABILITY AND COMMITMENT  
TO DELIVERING HIGH-QUALITY PRODUCTS  
THAT DRIVE INDUSTRY GROWTH AND ECONOMIC PROGRESS.



# CROWN AS A VALUE STOCK

CROWN is committed to delivering consistent returns to its stockholders through cash dividends. Beyond compliance with its corporate governance policy—requiring at least 10% of net income to be distributed as dividends—the Company sees this as a gesture of appreciation for its investors' continued trust and support. As evidenced by historical data, CROWN has maintained dividend rates significantly above the required minimum in most years.

DIVIDEND RATE



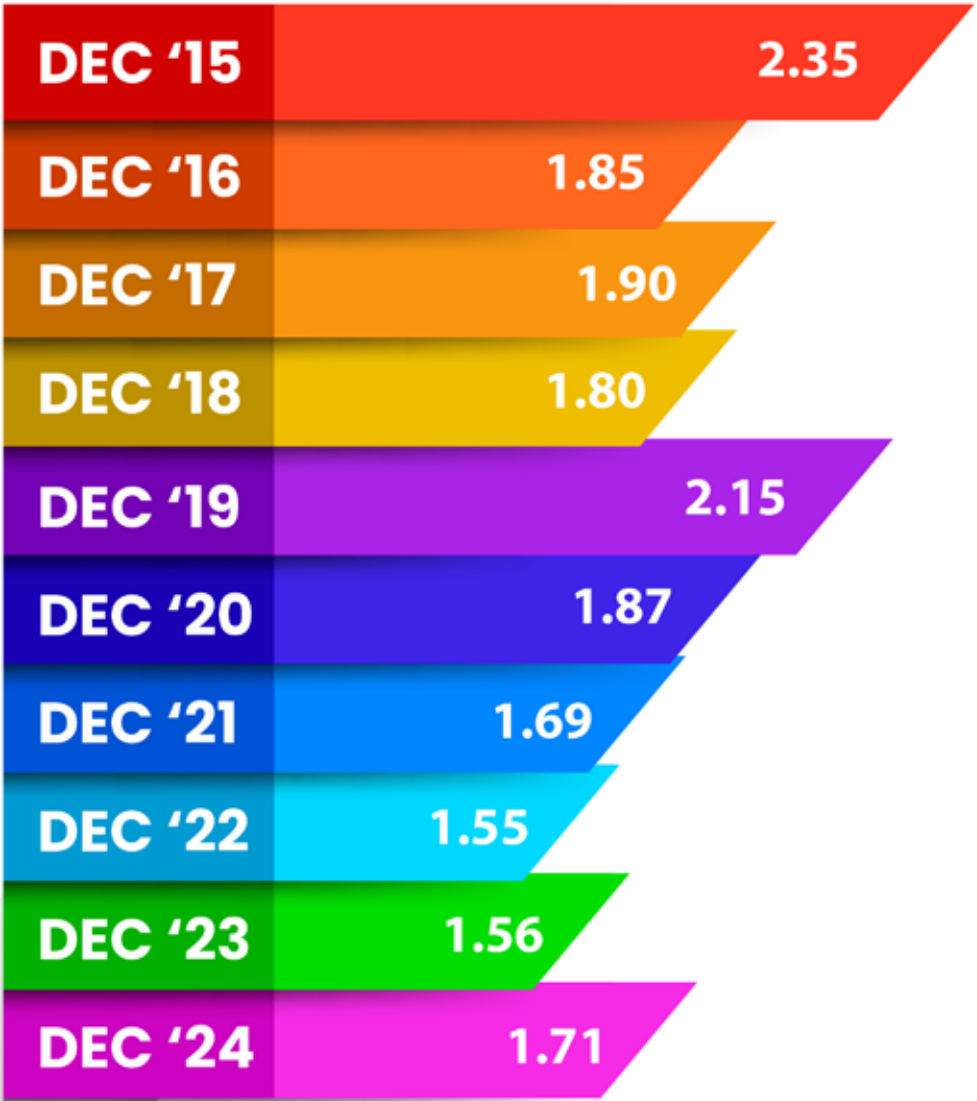
DIVIDEND YIELD



\* CROWN Dividend Yield: Dividend Price per Share / Market Price per Share

Since its initial public offering (IPO) in 2015, where shares were priced at Php1.41, CROWN's stock value has remained stable. Even during the pandemic, share prices did not fall below the IPO price. By the end of 2024, CROWN's stock was valued at Php1.71 per share, reflecting its resilience and strong market confidence.

PRICE SHARE



## COMMITMENT TO INTEGRITY AND ANTI-CORRUPTION PRACTICES

Integrity is at the core of CROWN's corporate values. The Company upholds strict governance policies to ensure ethical business conduct across all levels of the organization. These policies include a No Gift Policy and a Whistleblowing Policy, which reinforce transparency and accountability.

As of the reporting period, there have been no reported incidents of corruption involving employees, directors, or business partners, underscoring CROWN's strong commitment to ethical and responsible business practices.



# TRANSFORMING INFRASTRUCTURE WITH **CROWN®**

## SUPPORTING SUSTAINABLE DEVELOPMENT AND ECONOMIC GROWTH

At CROWN Asia Chemicals Corporation, the manufacturer of the leading brand CROWN Pipes, we recognize that sustainable infrastructure is the foundation of economic progress, environmental stewardship, and social well-being. By supplying high-quality, durable, and innovative piping solutions, we contribute to national development efforts that enhance connectivity, promote sustainable industrialization, and improve the quality of life for Filipinos.

Our role in infrastructure development aligns with the United Nations Sustainable Development Goals (UN SDGs), particularly:

- SDG 6 (Clean Water and Sanitation) – Ensuring access to safe and reliable water through high-quality piping systems.
- SDG 7 (Affordable and Clean Energy) – Supporting the transition to renewable energy sources with infrastructure solutions for solar and hydro projects.
- SDG 9 (Industry, Innovation, and Infrastructure) – Strengthening sustainable and resilient infrastructure, advancing technological innovation, and fostering economic growth.
- SDG 11 (Sustainable Cities and Communities) – Contributing to well-planned urban development, modern housing solutions, and improved public services.
- SDG 12 (Responsible Consumption and Production) – Promoting the use of high-quality, durable materials that reduce waste and enhance efficiency.

### DRIVING NATIONAL PROGRESS THROUGH INFRASTRUCTURE

CROWN PIPES is actively engaged in transformational projects, including the 33-kilometer Metro Manila Subway project, announced in October 2022, which will improve urban mobility and reduce congestion. Additionally, our Bulacan plant expansion—involving machinery rehabilitation, logistics enhancement, and new facility development—demonstrates our commitment to strengthening local production capacity and generating employment opportunities.

METRO MANILA SUBWAY






MALOLOS CLARK RAIL WAY




SKYWAY STAGE WIDENING

## SECTORAL CONTRIBUTIONS TO SUSTAINABLE DEVELOPMENT MOBILITY AND TRANSPORT


Efficient transportation infrastructure is essential for economic growth, facilitating the movement of people, goods, and services. By supplying pipes and fittings for major railway, subway, and expressway projects, CROWN Pipes supports the development of a modern, interconnected Philippines, minimizing delays in logistics, reducing travel disruptions, and ensuring seamless mobility.



SKYWAY STAGE 3



CAVITE-LAGUNA EXPRESSWAY



SOUTH COMMUTER RAILWAY PROJECT

## GATEWAYS

As the Philippine government prioritizes the development of airport, seaport, and transportation infrastructure, CROWN Pipes plays a crucial role in modernizing transport hubs. By supplying high-quality piping solutions, we support projects that enhance trade efficiency, strengthen international connectivity, and improve overall mobility. Our contributions help ensure that railways, subways, expressways, and ports are built with durable, sustainable materials, reinforcing the country's long-term economic growth and seamless transportation networks.



ILOILO TERMINAL MARKET



CLARK AIR TRAFFIC CONTROL TOWER



FAB CENTRAL TERMINAL





EPLDT-VITRO STA ROSA

## DIGITAL COMMUNICATION

In an increasingly digital world, fast and reliable connectivity is crucial for businesses, education, and daily transactions. CROWN PIPES's Telecom Pipes help strengthen digital communication infrastructure, ensuring seamless data transmission and supporting the expansion of fiber-optic networks and 5G technology.



CALAMBA DOCTOR'S COLLEGE

## EDUCATION

Investing in educational infrastructure is critical for fostering academic excellence and lifelong learning. CROWN PIPES contributes to school and university development projects, helping create modern, safe, and sustainable learning environments that support the next generation of Filipino leaders.

OUR LADY OF FATIMA UNIVERSITY

DE LA SALLE LIPA

UNIVERSITY OF PHILIPPINES DILIMAN





ALDER RESIDENCES



AVIDA CENTRALIS



LIGHT 2 RESIDENCES



ARCOVIA PARK PLACE

## TOURISM

The Philippine tourism industry continues to thrive, with the construction of hotels, resorts, and recreational establishments catering to both local and international travelers. CROWN Pipes contributes to this growth by providing high-quality, sustainable piping solutions that ensure safety, reliability, and long-term efficiency in hospitality infrastructure. By supporting world-class tourism developments, we help create vibrant, sustainable destinations that drive economic opportunities while maintaining environmental responsibility.



ST LUKES MEDICAL CENTER



PRIME HOSPITAL AND MEDICAL CENTER



VETERANS MEMORIAL MEDICAL CENTER

## HEALTH AND WELLNESS

A well-functioning healthcare system is fundamental to national well-being. CROWN PIPES supports the development of hospitals, medical centers, and health facilities by supplying safe and reliable piping solutions that ensure efficient water supply, sanitation, and air circulation, contributing to clean, safe, and resilient medical environments.



PHILIPPINE ORTHOPEDIC CENTER



MANILA DOCTORS HOSPITAL





LA MESA WATER TREATMENT PLANT



LAGUNA LAKE WATER TREATMENT PLANT

## WATER SOURCES AND SANITATION

Access to clean and safe water is a fundamental human right. CROWN PIPES supplies PPR, HDPE, Infrablue, and Safe Blue pipes and fittings to support the delivery of potable water and efficient irrigation systems across the country. By improving water infrastructure, we help communities achieve better sanitation, reduced waterborne diseases, and improved overall well-being.



MAYNILAD CENTRAL DEPOT



PASAY WATER FACILITIES



## ALTERNATIVE ENERGY

As the demand for clean and renewable energy increases, CROWN PIPES provides infrastructure support for solar, hydro, and wind power facilities nationwide. Our durable piping solutions play a crucial role in enabling efficient and long-lasting energy systems, contributing to the Philippines' transition to a low-carbon economy.



MARILAD EHV SUBSTATION



EXCELLENT ENERGY RESOURCES INC.





POSITANO MACTAN



AURELIA RESIDENCE

## WORK SPACES AND RESIDENCES

As urbanization accelerates, CROWN PIPES provides high-quality construction materials, including pipes, roofing, and sanitary solutions, for residential and office developments. By promoting sustainable construction practices, we help developers and homeowners build resilient, long-lasting properties that support a high quality of life.



FORTIS RESIDENCES



MAPLE TOWER



GALLEO RESIDENCE



COVENT GARDENS



KINGSFORD HOTEL BACOLOD



9 CENTRAL PARK

## MIXED-USE COMMERCIAL

Integrated township developments represent the future of urban planning, offering a blend of residential, commercial, and recreational spaces within a self-sustaining community. CROWN PIPES's reliable construction materials ensure that these modern townships are built to last, supporting sustainable growth in both urban and rural areas.



KINGSQUARE RESIDENTIAL SUITES



TWIN LAKES COUNTRYWOODS





UNITOP LEGAZPI ALBAY



LANDMARK MANILA BAY



ABENSON DAGUPAN

## COMMERCIAL INFRASTRUCTURE

CROWN PIPES' products are integral to shopping malls, business hubs, and mixed-use developments, ensuring the creation of energy-efficient and high-performance commercial spaces that enhance the convenience and lifestyle experience of Filipino consumers.



SM DAVAO EXPANSION



SM CITY EAST ORTIGAS EXPANSION



HARDWARE STORE WAREHOUSE PROJECT

## SUSTAINABLE AGRIBUSINESS

Agriculture remains a key pillar of the Philippine economy. CROWN PIPES contributes to sustainable farming solutions by providing durable, energy-efficient roofing and construction materials for warehouses, greenhouses, livestock shelters, and farm facilities. These advancements support food security, climate resilience, and long-term agricultural sustainability.



SANS HOTELS WAITING SHED



CHUCHI WAREHOUSE



ASEAN TIMBER WAREHOUSE







# **CROWN ASIA CHEMICALS CORPORATION**

**MAIN OFFICE / PLANT : Km. 33 McArthur Highway, Tuktukan, Guiguinto Bulacan, Philippines**

**ADMIN OFFICE : Rm. 508 President Tower, 81 Timog Avenue, Quezon City • Tel No.: 8294-2071 • Fax No.: 3412-0642**

**PLANT : ITC Compound, Canumay East Valenzuela City, Metro Manila • Tel No. : 8277-0880**

**Email: [sales@crownpvc.com.ph](mailto:sales@crownpvc.com.ph) • [sales@crownroofing.com.ph](mailto:sales@crownroofing.com.ph) • [salesppr@crownpvc.com.ph](mailto:salesppr@crownpvc.com.ph) • [septic-tech@crownpvc.com.ph](mailto:septic-tech@crownpvc.com.ph)**

**Website : [www.cronpvc.com.ph](http://www.cronpvc.com.ph)**